

OCX TVision : Active-X data access

A new Active-X component is provided with **TopKapi Vision V4.0** version. It brings read/write access to the application variables, and read access to histories and sampling files.

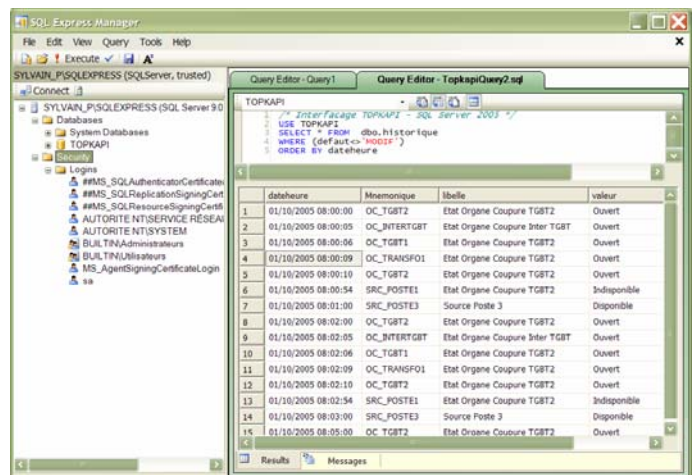
This Active-X component can be used with any language having Active-X support such as Visual BASIC, Java, C++, C#, .NET and allows for example integration in a DBMS (such as Oracle, SQL Server, or more simply Access and even Excel) or the development of an independent application in Visual BASIC or any other language, or finally incorporation in an HTML page of the VBScript code allowing the interfacing with the TOPKAPI application data.

INTEGRATION WITH THE DBMS

Just with a few program lines, the historical data and the samples of TOPKAPI are accessible in a database server.

One can then carry out all SQL requests, analyze the process data, carry out the adapted treatments, etc.

Reciprocally, the data resulting from the others applications of the company, ERP, MES, scheduling, planning and manufacturing data, recipes, etc., could be sent to the SCADA system to be taken into account in the automation process.



FEATURES

The TVision component brings the following functions:

- ▶ Access in reading to all the variables of the SCADA application
- ▶ Access in writing to the variables of the application parameterized to be accessible in writing
- ▶ Write control by password if the access rights were activated in **TopKapi**
- ▶ Access in reading to the configuration:
 - datasheets list
 - variables list (by sheet or global)
 - group of events list
- ▶ Access in reading to the contents of the histories, entirely or from date to date
- ▶ Access in reading to the sampling files, entirely or from date to date
- ▶ Read/write access via the standardized ADO interface (Active-X Data Object) by most of the DBMS systems
- ▶ Network ready (TOPKAPI LTS server technology, IP sockets)

To interface your own applications with TOPKAPI simply consist in establishing connection between the TVision Active-X object and the TOPKAPI server, then to invoke the data exchange functions.

Active-X enables connectivity with most of the DataBase Management Systems.

