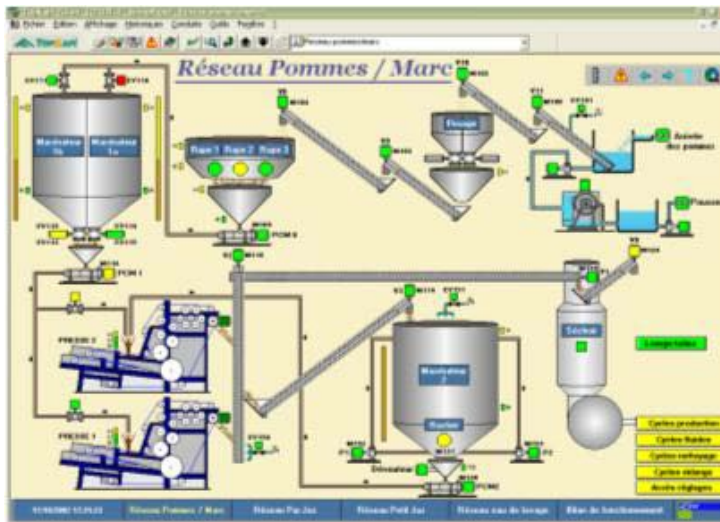


TOPKAPI Achievements

AGRO-FOOD: A FIZZY PRODUCT

For highly recognized technical reasons, *TOPKAPI* has become a reference in all remote management applications, in fields such as water management and treatment, building automation energy. This could sometimes hide its intrinsic qualities; *TOPKAPI* also offers many benefits in more standard applications, where the choice of products ensuring basic functions is broader. The following example illustrates these qualities.

STE Industrie Environnement, a subsidiary of the GTIE group based in DINAN, developed many applications using *TOPKAPI* over the last few years, with a particular care in the operator interface's graphic quality. *TOPKAPI* was chosen to implement supervision in a cider manufacturing facility in PLEUDIHEN (Côtes d'Armor) for the farm cooperative of Val de Rance. *TOPKAPI* enables viewing the status of the equipment and controlling it remotely. The process includes an aqueous flow conveyor system, crushers, brewers, belt presses, pumps and valves on the fluid circuits, and tanks.



STE Industrie Environnement consider they benefit from very concrete benefits from using *TOPKAPI* in terms of profitability: Prompt and easy initial implementation. Easy operator training (2 to 3 hours when commissioning are sufficient in most cases). A system very easy to modify: little support required by the operator when modifying the application: modification needs are indeed frequent to improve alarms management, traceability, integrate new equipment, etc. The operators get acquainted with the system without "breaking" it through handling mistakes, and without asking the installer for support which can rarely be billed.

Reliability: interventions caused by malfunctions after commissioning are rare. Price of *TOPKAPI* licenses very attractive considering the product's quality.

Reciprocal benefits, as AREAL has been rewarded with loyalty and excellent work relationships with **STE Industrie Environnement** over the last 10 years.