



*Saves Your Energy*

# Enclosing solutions for the doors and gates industry

We are professionals in providing customer-specific enclosing solutions targeted at demanding environments. We are a reliable partner with technical expertise and an experienced design department. We keep to schedule and offer excellent customer care.

We have years of experience in a range of applications for the doors and gates industry. Deeply familiar with your segment we are able to offer you technical solutions meeting your needs.

Our offering covers thermoplastic, sheet steel, aluminium and polyester solutions. Special material is available on request. Our solutions typically have a high degree of protection (IP66/67). We have also developed solutions meeting IP 69 K.

## Our capabilities

In Finland and Estonia, we have modern production facilities with the latest robot technology.

We are experts in injection-moulding. The capacity of our injection-moulding machines ranges from 50 to over 1,000 tn. We use CuboFlex robot cells and CNC units for customising our thermoplastic enclosures.

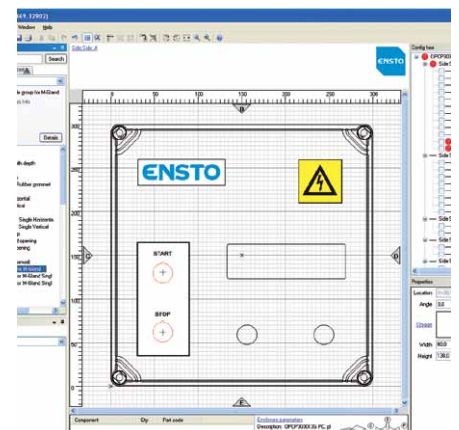
Fully automatic robotic cells are also used for manufacturing our sheet steel enclosures. Our bending cells provide flexible dimensioning, without tool changes. In addition, the laser cutting technology we use enables freely customised shapes and main dimensions without setup times.

## Our strengths include

- Experienced design department
- Innovative personnel with technical expertise
- Years of experience of doors and gates applications
- Smooth technical documentation and prototyping services
- Sound knowledge of a wide range of materials
- Reliable deliveries
- Flexible deliveries also possible in special packages
- Assembly services
- Online configuration tool Cubolink available for fast configuration of customised enclosures and leaner order-delivery process



A door control unit application, including a customised Ensto Cubo S enclosure in a customer-specific colour.



Our Web-based CuboLink configuration tool is available for our customers' use.



CuboFlex robot cell used for customising thermoplastic enclosures.



Our bending cell used for making sheet steel enclosures offers flexible dimensioning without tool changes.

## Our service offering

Our service offering includes the customisation of standard enclosures and the tailoring of totally new enclosing solutions on the basis of customers' needs. We also offer assembly services.

We are experts in product design and development and offer totally tailor-made solutions, starting from 3D modelling and quick prototyping.

Our standard product range includes thermoplastic, sheet steel and aluminium enclosures. In addition, we have a wide range of innovative accessories suitable for applications requiring a high degree of protection.

Our standard thermoplastic enclosures have a modular tooling structure enabling cost efficient mould modifications of any side of the enclosure. Steel enclosures, in turn, are also available with customer-specific dimensioning in small volumes at competitive prices.

## Knowledge of wide range of materials

We have sound knowledge of a wide range of materials.

We use high quality materials provided by world leading material suppliers. Our plastic materials are halogen-free. The polycarbonate material used is UV resistant and self-extinguishing. It also bears the UL Plastic Recognition Yellow Card.

Read more about our solutions at [www.ensto.com](http://www.ensto.com).

## Customer-specific enclosing solutions

Customised solutions based on standard enclosures

Tailor-made solutions based on customer's product projects

### Customising services:

- Manufacturing metal enclosures to customer-specific dimensions
- Machining, such as cutting, drilling and threading
- Printing e.g. company logos, operating instructions and symbols
- Painting the sheet steel enclosures
- Manufacturing plastic enclosures from coloured plastic raw material
- Assembling the enclosures with components such as cable glands, connectors and keypads
- Sourcing of third party components.

### Tailor-making services:

- Design and product development by technical experts
- Feasibility studies
- 3D modelling and technical documentation
- Rapid modelling and prototyping
- Injection mould sourcing and mould maintenance
- Manufacture of customer-specific special tools.



Customised Ensto Cubo S thermoplastic enclosures used in door control unit applications.



Our innovative hinged cover screws are an excellent option for traditional hinges in limited space.



Polycarbonate Ensto Cubo C enclosure customised with cutouts and prints.



*Saves Your Energy*

Ensto Finland Oy  
Ensio Miettisen katu 2, P.O. Box 77  
FIN-06101 Porvoo, Finland  
[enclosure.solutions@ensto.com](mailto:enclosure.solutions@ensto.com)  
[www.ensto.com](http://www.ensto.com)