

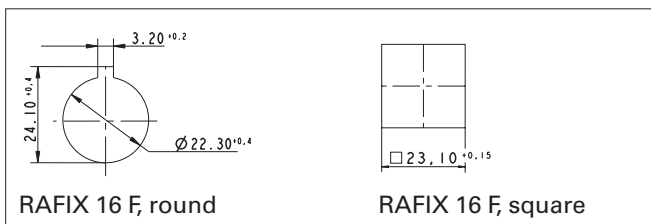
General information



RAFIX 16 is a complete control component series with low profile design.

Actuators

- Panel cut-out \varnothing 22.3 mm to IEC 60 947-5-1
- Panel cut-out \square 23.1 mm



- Locating lug (easily removable).
The locating lug can be easily removed using a screwdriver.
- Degree of protection IP65 on panel.
This is achieved by a reliable, tried and tested special seal.
- Grid spacing 25 x 25 mm
- Low profile, only 1.9 mm in front of the front panel
- Thickness of front panel 0.5 ... 3.5 mm
- Fixing with hexagon nut
- Fixing torque 1.2 Nm max.



Control components

Contact blocks

- Standard: for actuators with one-way operation
 - latching function
 - momentary function
- Universal: for E-stop pushbuttons and for actuators with two-way operation, e. g. selector switches
 - momentary function
- AS-Interface

Contact material

- Silver contacts for mains voltage
- Gold contacts for electronic circuits

Illumination

- Wedge base lamp or LED with socket W 2 x 4.6 d

Shock-resistance according to IEC 600 68-2-27

- Shock amplitude: \leq 50 g
- Shock time: 11 ms
- Shock type: half sinusoidal

Environment conditions

- acc. to IEC 600 68-2, -14, -30, -33 and -78

Temperature range

- Operating temperature:
 - non-illuminated: - 25 ... + 70 °C
 - illuminated: - 25 ... + 55 °C
- Storage temperature: - 40 ... + 85 °C

RAFIX 16 F - Pushbutton



2

General Data

RAFIX 16 F pushbuttons provide with less than 2 mm height above the front-panel an extremely low-profile design. The versions with square collars can be placed side by side so that a completely closed keyboard survey is possible.

RAFIX
16

Technical Data

General information

Form of lens	see order block
Colour of lens	see order block
Form of collar	see order block
Colour of collar	see order block

Dimensions

Collar dimensions	see order block
Overall height	see order block
Mounting depth with contact block	50 mm
Key grid	see order block
Mounting hole	see order block

Mechanical design

Mounting	ring nut
Contact function	je nach Schaltelement
Illumination	see order block

Mechanical characteristics

Robustness min.	100 N
-----------------	-------

Electrical characteristics

Protection class	see order block
------------------	-----------------

Other specifications

Operating life (operations)	2,000,000
Degree of protection from front side	IP65
Operation temperature min.	-25 °C
Ambient temp. operating max. without lamp /LED	+70 °C
Ambient temp. operating max. with lamp /LED	+55 °C
Storage temperature min.	-40 °C
Storage temperature max.	+85 °C
Environmental resistance	acc. to IEC 60068-2 -14, -30, -33 and -78

Approvals



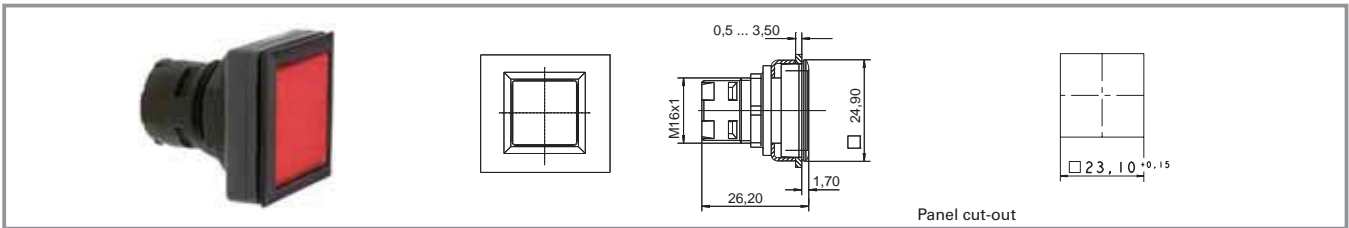
IEC 61058

Typical accessories RAFIX 16 F - Pushbutton

Description	Photo	Order no.	Additional accessories see page
RAFIX 16 - Standard contact block, 1 NC + 1 NO, momentary, silver contacts, with lamp socket		1.20.122.001/0000	2 - 82
RAFIX 16 - Standard contact block, 1 NC + 1 NO, momentary, gold contacts, with lamp socket		1.20.122.011/0000	2 - 76
RAFIX 16 - Standard contact block, 1 NC + 1 NO, momentary, silver contacts, without lamp socket		1.20.122.021/0000	2 - 82
RAFIX 16 - Standard contact block, 1 NC + 1 NO, momentary, gold contacts, without lamp socket		1.20.122.031/0000	2 - 76
RAFIX 16 - Standard contact block, silver contacts, with lamp socket, screw terminals		1.20.122.101/0000	2 - 83
RAFIX 16 - Standard contact block, gold contacts, with lamp socket, screw terminals		1.20.122.111/0000	2 - 77
RAFIX 16 - Contact block AS-I, standard		1.20.130.101/0000	2 - 87
LED W 2 x 4.6d superbright, white, 24 V		1.90.690.365/0000	5 - 14
Disassembly tool for LUMOTAST 25, RAFIX 16		5.05.800.042/0000	2 - 94
Fixing spanner for hexagon nut		5.58.002.034/0000	2 - 95
Legend insert, blank, use only for transparent lenses		5.70.635.000/2000	

For other contact blocks, refer to the chapter „RAFIX 16 contact blocks“; for additional accessories, refer to the chapter „RAFIX 16 special accessories“.

RAFIX 16 F - Pushbutton, flush lens, square black collar



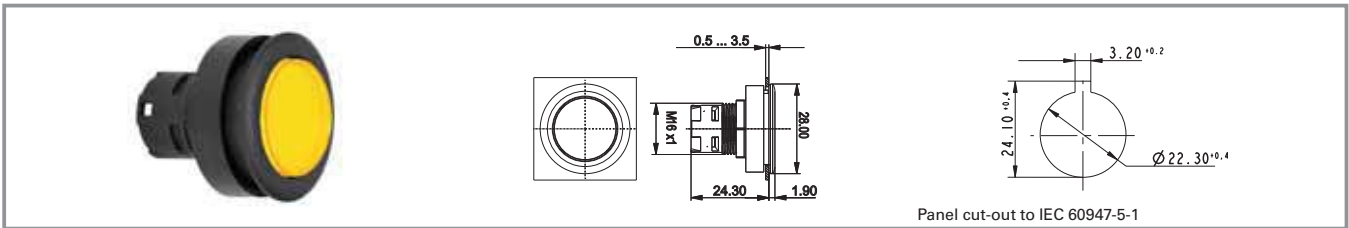
Colour of collar	Illumination	Colour of lens	Order no. complete	Order no. single parts	
				Housing	Lens
black	yes	transparent colourless	1.30.090.001/1000	1.30.090.501/0000	5.49.077.011/1002
black	yes	transparent red	1.30.090.001/1300	1.30.090.501/0000	5.49.077.011/1306
black	yes	transparent yellow	1.30.090.001/1400	1.30.090.501/0000	5.49.077.011/1403
black	yes	transparent green	1.30.090.001/1500	1.30.090.501/0000	5.49.077.011/1505
black	yes	transparent blue	1.30.090.001/1600	1.30.090.501/0000	5.49.077.011/1607
black	no	opaque black	1.30.090.251/0100	-	-
black	no	opaque white	1.30.090.251/0200	-	-
black	no	opaque red	1.30.090.251/0300	-	-
black	no	opaque yellow	1.30.090.251/0400	-	-
black	no	opaque green	1.30.090.251/0500	-	-
black	no	opaque blue	1.30.090.251/0600	-	-

Technical data see page 2 - 52

Accessoires:

Legend insert, blank, use only for transparent lenses: **5.70.635.000/2000**

RAFIX 16 F - Pushbutton, flush lens, round black collar



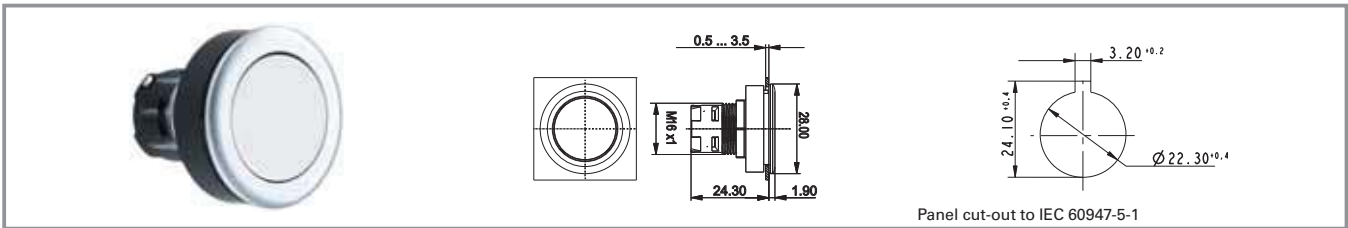
Colour of collar	Illumination	Colour of lens	Order no. complete	Order no. single parts	
				Housing	Lens
black	yes	transparent colourless	1.30.090.011/1000	1.30.090.511/0000	5.49.259.017/1002
black	yes	transparent red	1.30.090.011/1300	1.30.090.511/0000	5.49.259.017/1306
black	yes	transparent yellow	1.30.090.011/1400	1.30.090.511/0000	5.49.259.017/1403
black	yes	transparent green	1.30.090.011/1500	1.30.090.511/0000	5.49.259.017/1505
black	yes	transparent blue	1.30.090.011/1600	1.30.090.511/0000	5.49.259.017/1607
black	no	opaque black	1.30.090.261/0100	-	-
black	no	opaque white	1.30.090.261/0200	-	-
black	no	opaque red	1.30.090.261/0300	-	-
black	no	opaque yellow	1.30.090.261/0400	-	-
black	no	opaque green	1.30.090.261/0500	-	-
black	no	opaque blue	1.30.090.261/0600	-	-
black	ring illumination	opaque black	1.30.090.011/6030	-	-

Technical data see page 2 - 52

Accessoires:

Legend insert, blank, use only for transparent lenses: **5.70.637.000/2000**

NEW RAFX 16 F - Pushbutton, flush lens, round metallized collar



Panel cut-out to IEC 60947-5-1

Colour of collar	Illumination	Colour of lens	Order no. complete	Order no. single parts	
				Housing	Lens
metallic	ring illumination	silver grey	1.30.090.082/0000	-	-
metallic	yes	transparent colourless	1.30.090.012/1000	-	-
metallic	yes	transparent red	1.30.090.012/1300	-	-
metallic	yes	transparent yellow	1.30.090.012/1400	-	-
metallic	yes	transparent green	1.30.090.012/1500	-	-
metallic	yes	transparent blue	1.30.090.012/1600	-	-
metallic	no	opaque black	1.30.090.262/0100	-	-
metallic	no	opaque white	1.30.090.262/0200	-	-
metallic	no	opaque red	1.30.090.262/0300	-	-
metallic	no	opaque yellow	1.30.090.262/0400	-	-
metallic	no	opaque green	1.30.090.262/0500	-	-
metallic	no	opaque blue	1.30.090.262/0600	-	-

Technical data see page 2 - 52

Accessoires:

Legend insert, blank, use only for transparent lenses: **5.70.637.000/2000**

2

RAFIX
16

RAFIX 16 F - Selector switch



Handle marking opaque white

2

General Data

The illuminated selector switches are provided with translucent handle markings. These are opaque on the non-illuminated versions.

RAFIX
16

Technical Data

General information

Actuator	handle
Colour of handle marking	see order block
Form of collar	see order block
Colour of collar	see order block

Dimensions

Collar dimensions	see order block
Overall height	12.1 mm
Mounting depth with contact block	50 mm
Key grid	see order block
Mounting hole	see order block

Mechanical design

Mounting	ring nut
Contact function	see order block
Illumination	see order block
Rotating angle	see order block

Mechanical characteristics

Torque max.	1.3 Nm
-------------	--------

Electrical characteristics

Protection class	-
------------------	---

Other specifications

Operating life (operations)	30.000
Degree of protection from front side	IP65
Operation temperature min.	-25 °C
Ambient temp. operating max. without lamp /LED	+70 °C
Ambient temp. operating max. with lamp /LED	+55 °C
Storage temperature min.	-40 °C
Storage temperature max.	+85 °C
Environmental resistance	acc. to IEC 60068-2 -14, -30, -33 and -78

Approvals

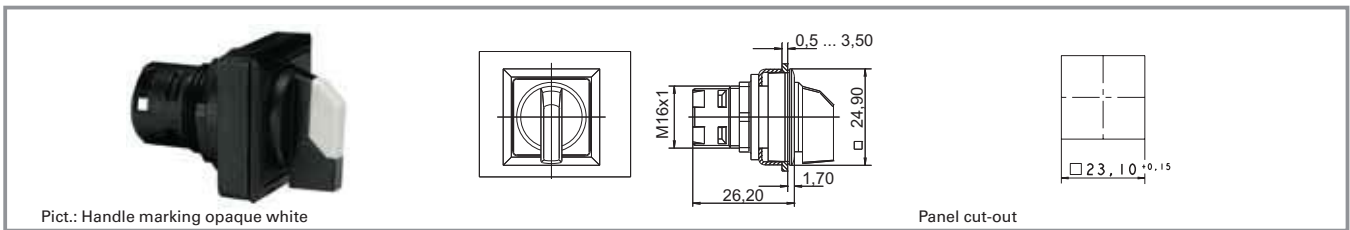


IEC 61058

Typical accessories RAFIX 16 F - Selector switch

Description	Photo	Order no.	Additional accessories see page
RAFIX 16 - Universal contact block, 1 NC + 1 NO, momentary, silver contacts, with lamp socket		1.20.123.001/0000	2 - 84
RAFIX 16 - Universal contact block, 1 NC + 1 NO, momentary, gold contacts, with lamp socket		1.20.123.011/0000	2 - 78
RAFIX 16 - Universal contact block, gold contacts, with lamp socket, screw terminals		1.20.123.111/0000	2 - 79
RAFIX 16 - Universal contact block, silver contacts, without lamp socket, screw terminals		1.20.123.121/0000	2 - 85
RAFIX 16 - Contact block AS-I, standard		1.20.130.101/0000	2 - 87
Fixing spanner for hexagon nut		5.58.002.034/0000	2 - 95

RAFIX 16 F - Selector switch, square black collar



Pict.: Handle marking opaque white

Panel cut-out

Colour of collar	Illumination	Contact function	Rotating angle		Colour of handle marking	Order no.
black	yes	momentary	1 x 40°		translucent white	1.30.093.551/2000
black	yes	momentary	2 x 40°		translucent white	1.30.093.651/2000
black	yes	latching	1 x 90°, form L		translucent white	1.30.093.501/2000
black	yes	latching	1 x 90°, form V		translucent white	1.30.093.601/2000
black	yes	latching	2 x 60°		translucent white	1.30.093.701/2000
black	no	momentary	1 x 40°		opaque white	1.30.093.550/0200
black	no	momentary	2 x 40°		opaque white	1.30.093.650/0200
black	no	latching	1 x 90°, form L		opaque white	1.30.093.500/0200
black	no	latching	1 x 90°, form V		opaque white	1.30.093.600/0200
black	no	latching	2 x 60°		opaque white	1.30.093.700/0200

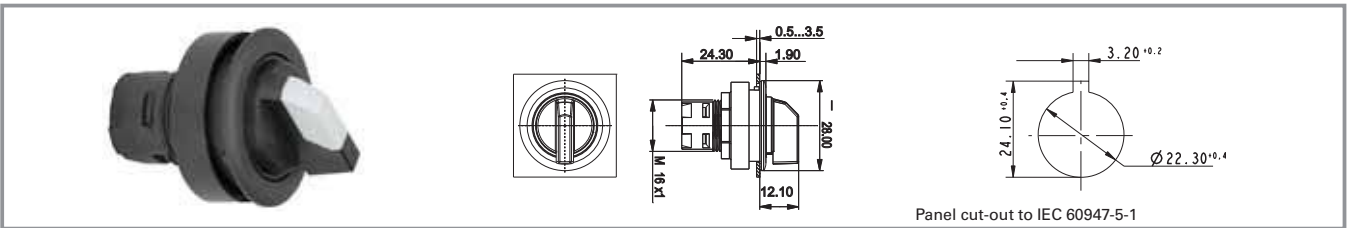
Technical data see page 2 - 58

Only use RAFIX 16 contact blocks with „momentary“ contact function. For versions with clockwise and counterclockwise rotation, use universal contact blocks only.

Other contact functions and handle markings available on request.

For coloured illumination of the handle marking please use contact block with lamp socket and coloured LED W 2 x 4,6d (see chapter 5 accessories).

RAFIX 16 F - Selector switch, round black collar



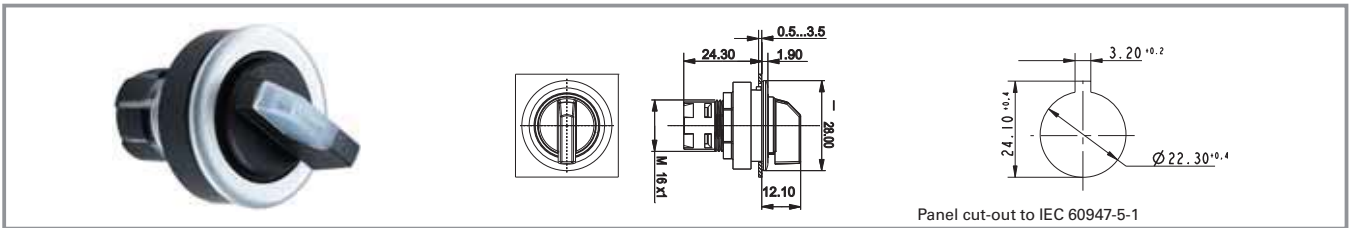
Panel cut-out to IEC 60947-5-1

Colour of collar	Illumination	Contact function	Rotating angle		Colour of handle marking	Order no.
black	yes	momentary	1 x 40°		translucent white	1.30.093.561/2000
black	yes	momentary	2 x 40°		translucent white	1.30.093.661/2000
black	yes	latching	1 x 90°, form L		translucent white	1.30.093.511/2000
black	yes	latching	1 x 90°, form V		translucent white	1.30.093.611/2000
black	yes	latching	2 x 60°		translucent white	1.30.093.711/2000
black	no	momentary	1 x 40°		opaque white	1.30.093.560/0200
black	no	momentary	2 x 40°		opaque white	1.30.093.660/0200
black	no	latching	1 x 90°, form L		opaque white	1.30.093.510/0200
black	no	latching	1 x 90°, form V		opaque white	1.30.093.610/0200
black	no	latching	2 x 60°		opaque white	1.30.093.710/0200

Technical data see page 2 - 58

NEW

RAFIX 16 F - Selector switch, round metallized collar



Panel cut-out to IEC 60947-5-1

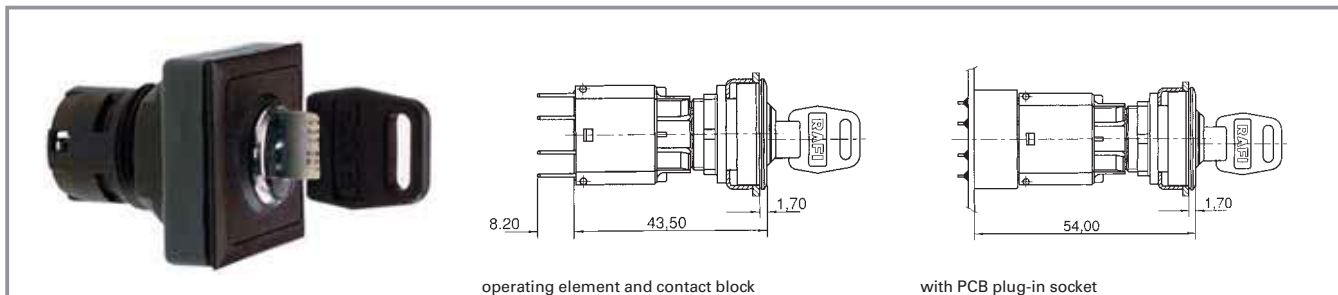
Colour of collar	Illumination	Contact function	Rotating angle		Colour of handle marking	Order no.
metallic	yes	momentary	1 x 40°		translucent white	1.30.093.571/2000
metallic	yes	momentary	2 x 40°		translucent white	1.30.093.671/2000
metallic	yes	latching	1 x 90°, form L		translucent white	1.30.093.521/2000
metallic	yes	latching	1 x 90°, form V		translucent white	1.30.093.621/2000
metallic	yes	latching	2 x 60°		translucent white	1.30.093.721/2000
metallic	no	momentary	1 x 40°		opaque white	1.30.093.570/0200
metallic	no	momentary	2 x 40°		opaque white	1.30.093.670/0200
metallic	no	latching	1 x 90°, form L		opaque white	1.30.093.520/0200
metallic	no	latching	1 x 90°, form V		opaque white	1.30.093.620/0200
metallic	no	latching	2 x 60°		opaque white	1.30.093.720/0200

Technical data see page 2 - 58

2

RAFIX
16

RAFIX 16 F - Keylock switch MICROMECC



2

Technical Data

General information

Form of lens	flat lens
Colour of lens	opaque black
Form of collar	see order block
	see order block

Dimensions

Collar dimensions	see order block
Overall height	24.10 mm
Mounting depth with contact block	50 mm
Key grid	see order block
Mounting hole	see order block

Mechanical design

Mounting	ring nut
Contact function	see order block
Illumination	no
Lock	Micromec
Wafers	5
Lock type	001
Number of locking positions	500
Main key	on request
Rotating angle	see order block
Key removal position	see order block

Mechanical characteristics

Torque max.	1.3 Nm
-------------	--------

Electrical characteristics

Protection class	II
------------------	----

Other specifications

Operating life (operations)	65.000
Degree of protection from front side	IP65
Operation temperature min.	-25 °C
Ambient temp. operating max. without lamp /LED	+70 °C
Ambient temp. operating max. with lamp /LED	-
Storage temperature min.	-40 °C
Storage temperature max.	+85 °C
Environmental resistance	acc. to IEC 60068-2
	-14, -30, -33 and -78
Ambient temp. operating max.	+70 °C
ESD-strength lock / contact	15 kV
ESD-strength key/ front panel	4 kV

Approvals



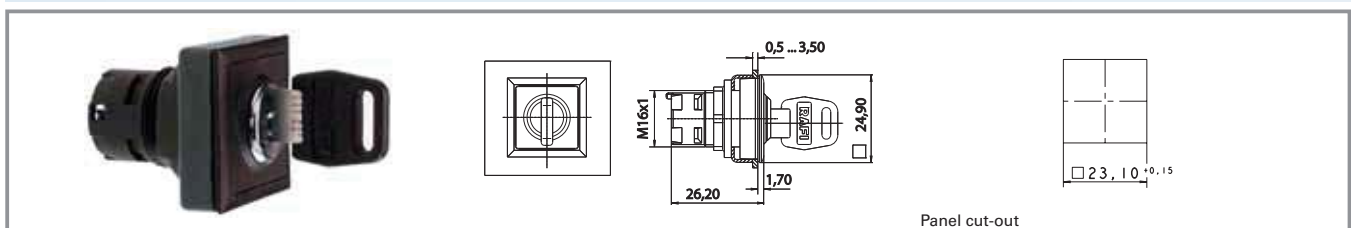
IEC 61058

Typical accessories RAFIX 16 F - Keylock switch MICROMECC

Description	Photo	Order no.	Additional accessories see page
RAFIX 16 - Universal contact block, 1 NC + 1 NO, momentary, silver contacts, without lamp socket		1.20.123.021/0000	2 - 84
RAFIX 16 - Universal contact block, 1 NC + 1 NO, momentary, gold contacts, without lamp socket		1.20.123.031/0000	2 - 78
RAFIX 16 - Universal contact block, gold contacts, with lamp socket, screw terminals		1.20.123.111/0000	2 - 79
RAFIX 16 - Universal contact block, silver contacts, without lamp socket, screw terminals		1.20.123.121/0000	2 - 85
RAFIX 16 - Contact block AS-I, standard		1.20.130.101/0000	2 - 87
Fixing spanner for hexagon nut		5.58.002.034/0000	2 - 95
Spare key, for single action, e.g. 1 x 90° (delivery content 1 key)		5.58.007.001/0000	
Spare key, for double action, e.g. 2 x 90° (delivery content 1 key)		5.58.008.001/0000	

For additional accessories, refer to the chapter „RAFIX 16 special accessories“

RAFIX 16 F - Keylock switch MICROMECC, square black collar

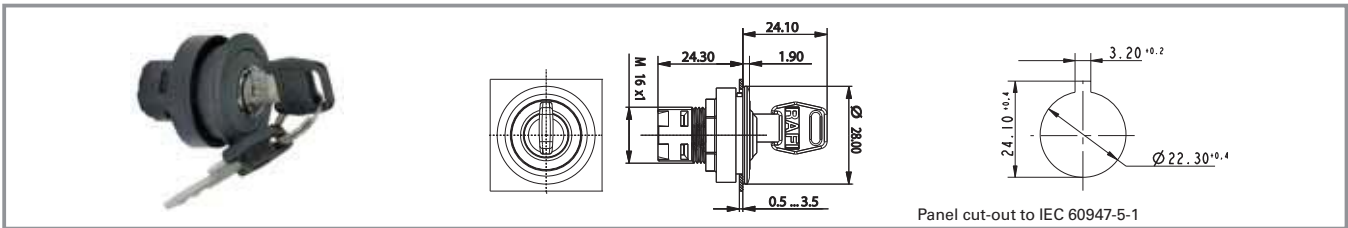


Colour of collar	Contact function	Colour of lens	Rotating angle	Key removal position	Order no.
black	momentary	opaque black	1 x 40°		1.30.096.501/0000
black	momentary	opaque black	2 x 40°		1.30.096.701/0000
black	latching	opaque black	1 x 90°, Form L		1.30.096.051/0000
black	latching	opaque black	1 x 90°, Form V		1.30.096.151/0000
black	latching	opaque black	2 x 90°		1.30.096.401/0000

Technical data see page 2 - 64

Only use RAFIX 16 contact blocks with „momentary“ contact function. For versions with clockwise and counterclockwise rotation, use universal contact blocks only.

RAFIX 16 F - Keylock switch MICROMECC, round black collar



Panel cut-out to IEC 60947-5-1

Colour of collar	Contact function	Colour of lens	Rotating angle	Key removal position	Order no.
black	momentary	opaque black	1 x 40°		1.30.096.511/0000
black	momentary	opaque black	2 x 40°		1.30.096.711/0000
black	latching	opaque black	1 x 90°, Form L		1.30.096.061/0000
black	latching	opaque black	1 x 90°, Form V		1.30.096.161/0000
black	latching	opaque black	2 x 90°		1.30.096.411/0000

Technical data see page 2 - 64

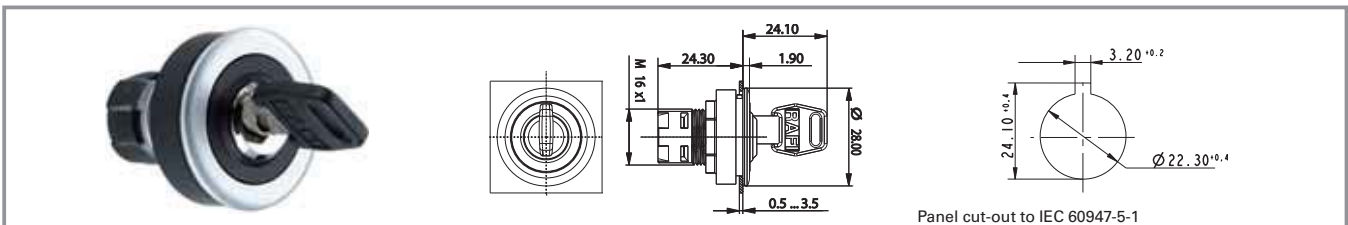
Only use RAFIX 16 contact blocks with „momentary“ contact function. For versions with clockwise and counterclockwise rotation, use universal contact blocks only.

2

RAFIX 16

NEW

RAFIX 16 F - Keylock switch MICROMECC, round metallized collar



Panel cut-out to IEC 60947-5-1

Colour of collar	Contact function	Colour of lens	Rotating angle	Key removal position	Order no.
metallic	momentary	opaque black	1 x 40°		1.30.096.521/0000
metallic	momentary	opaque black	2 x 40°		1.30.096.721/0000
metallic	latching	opaque black	1 x 90°, Form L		1.30.096.071/0000
metallic	latching	opaque black	1 x 90°, Form V		1.30.096.171/0000
metallic	latching	opaque black	2 x 90°		1.30.096.421/0000

Technical data see page 2 - 64

Only use RAFIX 16 contact blocks with „momentary“ contact function. For versions with clockwise and counterclockwise rotation, use universal contact blocks only.

RAFIX 16 F - Emergency stop pushbutton



2

Technical Data

General information		Mechanical characteristics	
Actuator	conical mushroom form	Robustness min.	100 N
Colour of mushroom	red, collar yellow	Electrical characteristics	
Form of collar	see order block	Protection class	see order block
Dimensions		Other specifications	
Collar dimensions	see order block	Operating life (operations)	10.000
Key grid	see order block	Degree of protection from front side	IP65
Overall height	24.10 mm	Operation temperature min.	-25 °C
Mounting depth with contact block	50 mm	Ambient temp. operating max. without lamp /LED	+70 °C
Key grid	see order block	Ambient temp. operating max. with lamp /LED	-
Mounting hole	see order block	Storage temperature min.	-40 °C
Mechanical design		Storage temperature max.	+85 °C
Mounting	ring nut	Environmental resistance	acc. to IEC 60068-2
Contact function	latching		-14, -30, -33 and -78
Illumination	no		
Rest	clockwise or counterclockwise rotation		

Approvals



IEC 61058

Typical accessories RAFIX 16 F - Emergency stop pushbutton

Description	Photo	Order no.	Additional accessories see page
RAFIX 16 - Universal contact block, 1 NC, momentary, silver contacts, without lamp socket		1.20.123.022/0000	2 - 84
RAFIX 16 - Universal contact block, 1 NC, momentary, gold contacts, without lamp socket		1.20.123.032/0000	2 - 78

Typical accessories RAFIX 16 F - Emergency stop pushbutton

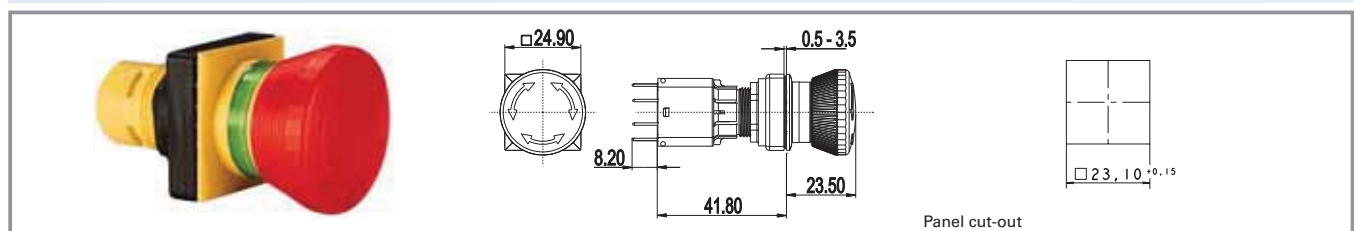
Description	Photo	Order no.	Additional accessories see page
RAFIX 16 - Universal contact block, silver contacts, without lamp socket, screw terminals		1.20.123.125/0000	2 - 85
RAFIX 16 - Universal contact block, gold contacts, without lamp socket, screw terminals		1.20.123.135/0000	2 - 79
RAFIX 16 - Contact block AS-I, E-stop, coupling contact		1.20.130.001/0000	2 - 89
Fixing spanner for hexagon nut		5.58.002.034/0000	2 - 95
Adhesive label yellow, round 22.3 / 60 mm, with legend 1 x „Not-Aus“		5.76.204.101/0400	2 - 99, 2 - 172, 2 - 238, 5 - 29

For other contact blocks, refer to the chapter „RAFIX 16 contact blocks“; for additional accessories, refer to the chapter „RAFIX 16 special accessories“

2

RAFIX
16

RAFIX 16 F - Emergency stop pushbutton, square collar

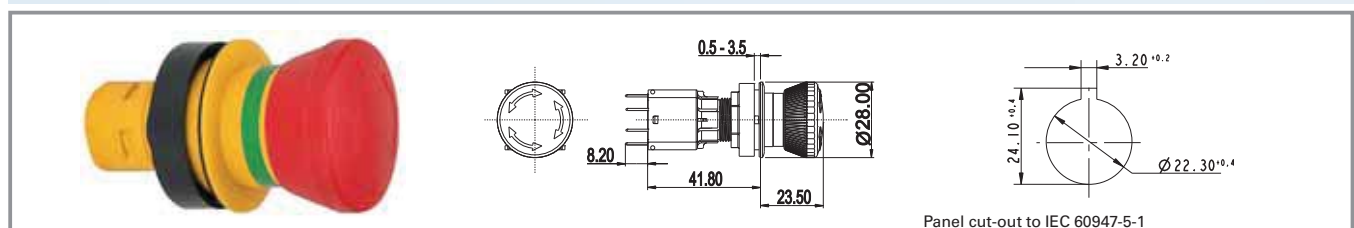


Contact function	Illumination	Colour of mushroom	Mounting hole	Order no.
latching	no	red, collar yellow	23.1 x 23.1	1.30.094.001/0300

Technical data see page 2 - 68

Only use universal contact blocks.

RAFIX 16 F - Emergency stop pushbutton, round collar



Contact function	Illumination	Colour of mushroom	Mounting hole	Order no.
latching	no	red, collar yellow	Ø 22.3	1.30.094.011/0300

Technical data see page 2 - 68

Only use universal contact blocks.

RAFIX 16 F - Signal indicator



2

RAFIX 16

Technical Data

General information

Form of lens	see order block
Colour of lens	see order block
Form of collar	see order block
Colour of collar	see order block

Dimensions

Collar dimensions	see order block
Overall height	see order block
Mounting depth with contact block	50 mm
Key grid	see order block
Mounting hole	see order block

Mechanical design

Mounting	ring nut
Contact function	-
Illumination	yes

Other specifications

Operating life (operations)	-
Degree of protection from front side	IP65
Operation temperature min. Ambient temp. operating max. without lamp /LED	-25 °C
Ambient temp. operating max. with lamp /LED	-
Storage temperature min.	+55 °C
Storage temperature max.	-40 °C
Environmental resistance	+85 °C
	acc. to IEC 60068-2
	-14, -30, -33 and -78

Approvals



IEC 61058

Typical accessories RAFIX 16 F - Signal indicator

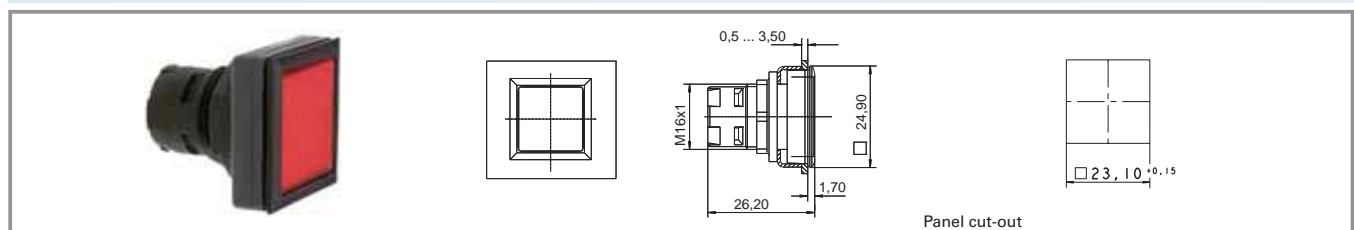
Description	Photo	Order no.	Additional accessories see page
RAFIX 16 - Lamp socket W 2 x 4.6 d		1.71.212.001/0000	2 - 91
RAFIX 16 - Lamp socket W 2 x 4.6 d		1.71.212.011/0000	2 - 91
LED W 2 x 4.6d superbright, white, 24 V		1.90.690.365/0000	5 - 14

Typical accessories RAFX 16 F - Signal indicator

Description	Photo	Order no.	Additional accessories see page
Disassembly tool for LUMOTAST 25, RAFX 16		5.05.800.042/0000	2 - 94
Fixing spanner for hexagon nut		5.58.002.034/0000	2 - 95
Legend insert, blank, use only for transparent lenses		5.70.635.000/2000	

For additional accessories, refer to the chapter „RAFIX 16 special accessories“

RAFIX 16 F - Signal indicator, flush lens, square black collar



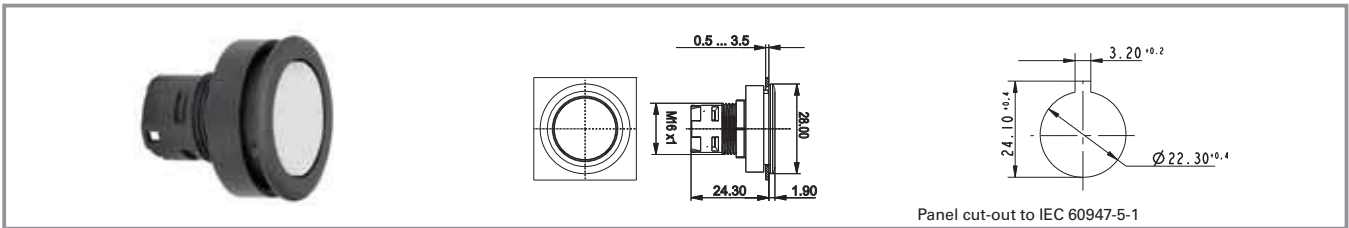
Colour of collar	Form of lens	Overall height	Colour of lens	Order no. complete	Order no. single parts	
					Housing	Lens
black	flat lens	1.7 mm	transparent colourless	1.65.126.301/1000	1.65.126.401/0000	5.49.077.011/1002
black	flat lens	1.7 mm	transparent red	1.65.126.301/1300	1.65.126.401/0000	5.49.077.011/1306
black	flat lens	1.7 mm	transparent yellow	1.65.126.301/1400	1.65.126.401/0000	5.49.077.011/1403
black	flat lens	1.7 mm	transparent green	1.65.126.301/1500	1.65.126.401/0000	5.49.077.011/1505
black	flat lens	1.7 mm	transparent blue	1.65.126.301/1600	1.65.126.401/0000	5.49.077.011/1607

Technical data see page 2 - 70

Accessoires:

Legend insert, blank, use only for transparent lenses: **5.70.635.000/2000**

RAFIX 16 F - Signal indicator, flush lens, round black collar

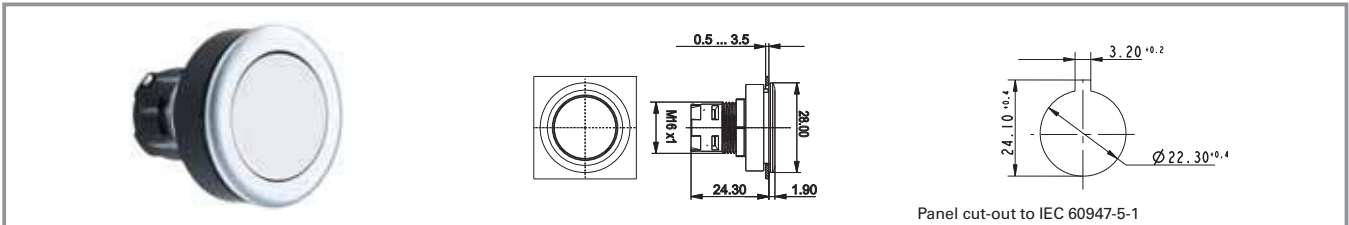


Panel cut-out to IEC 60947-5-1

Colour of collar	Form of lens	Overall height	Colour of lens	Order no. complete	Order no. single parts	
					Housing	Lens
black	flat lens	1.9 mm	transparent colourless	1.65.126.001/1000	1.65.126.101/0000	5.49.259.017/1002
black	flat lens	1.9 mm	transparent red	1.65.126.001/1300	1.65.126.101/0000	5.49.259.017/1306
black	flat lens	1.9 mm	transparent yellow	1.65.126.001/1400	1.65.126.101/0000	5.49.259.017/1403
black	flat lens	1.9 mm	transparent green	1.65.126.001/1500	1.65.126.101/0000	5.49.259.017/1505
black	flat lens	1.9 mm	transparent blue	1.65.126.001/1600	1.65.126.101/0000	5.49.259.017/1607

Technical data see page 2 - 70

NEW RAFX 16 F - Signal indicator, flush lens, round metallized collar



Panel cut-out to IEC 60947-5-1

Colour of collar	Form of lens	Overall height	Colour of lens	Order no. complete	Order no. single parts	
					Housing	Lens
metallic	flat lens	1.9 mm	transparent colourless	1.65.126.011/1000	-	-
metallic	flat lens	1.9 mm	transparent red	1.65.126.011/1300	-	-
metallic	flat lens	1.9 mm	transparent yellow	1.65.126.011/1400	-	-
metallic	flat lens	1.9 mm	transparent green	1.65.126.011/1500	-	-
metallic	flat lens	1.9 mm	transparent blue	1.65.126.011/1600	-	-

Technical data see page 2 - 70