



## General Data

### RAFIX 16 control component range

- For a mounting hole diameter of 16.2 mm to IEC 60947, resp. Ø 23.1 mm for RAFIX 16F
- 250V/6A max.
- Water-jet proof IP65
- Contact blocks: Gold and silver contacts with quick-connect terminals 2.8 x 0.8 mm; Option: PCB plug-in socket
- 3 collar shapes, low-profile design
- The lamps of the pushbuttons can be replaced from the front or rear.
- The contact blocks snap directly onto the actuators without a coupling element and can be easily removed by turning = cost reducing assembly.

The specified data apply only if actuators/signal indicators are combined with contact blocks and lamp sockets within the same product range.

## Content

<b>RAFIX 16 - Pushbutton</b>	<b>2 - 8</b>
RAFIX 16 - Pushbutton, flush lens, square collar	2 - 10
RAFIX 16 - Pushbutton, protruding lens, square collar	2 - 11
RAFIX 16 - Pushbutton, protruding collar, square collar	2 - 12
RAFIX 16 - Pushbutton, flush lens, round collar	2 - 13
RAFIX 16 - Pushbutton IP66 with protective cap	2 - 14
RAFIX 16 - Pushbutton, protruding lens, round collar	2 - 15
RAFIX 16 - Pushbutton, protruding collar, round collar	2 - 16
RAFIX 16 - Pushbutton, flush lens, square collar, alignable without gaps	2 - 17
<b>RAFIX 16 - Selector switch</b>	<b>2 - 18</b>
RAFIX 16 - Selector switch, square collar	2 - 20
RAFIX 16 - Selector switch, round collar	2 - 21
RAFIX 16 - Selector switch, square collar, alignable without gaps	2 - 22
<b>RAFIX 16 - Keylock switch MICROMECC</b>	<b>2 - 24</b>
RAFIX 16 - Keylock switch MICROMECC, square collar	2 - 26
RAFIX 16 - Keylock switch MICROMECC, round collar	2 - 27
RAFIX 16 - Keylock switch MICROMECC, square collar, alignable without gaps	2 - 28
<b>RAFIX 16 - Mushroom-headed pushbutton</b>	<b>2 - 30</b>
RAFIX 16 - Mushroom-headed pushbutton, round collar	2 - 31
<b>RAFIX 16 - Emergency stop pushbutton</b>	<b>2 - 32</b>
RAFIX 16 - Safety emergency stop pushbutton, round collar, dupe-proof, non-blocking	2 - 33
RAFIX 16 - Safety emergency stop pushbutton, round collar, conical, dupe-proof, non-blocking	2 - 34
RAFIX 16 - Emergency stop pushbutton, square collar, illuminable	2 - 34
RAFIX 16 - Emergency stop pushbutton, square collar, not illuminable	2 - 34
RAFIX 16 - Emergency stop pushbutton, round collar, illuminable	2 - 35
RAFIX 16 - Emergency stop pushbutton, round collar, not illuminable	2 - 35
<b>RAFIX 16 - Toggle switch</b>	<b>2 - 36</b>
RAFIX 16 - Toggle switch, square collar	2 - 37
RAFIX 16 - Toggle switch, round collar	2 - 37
RAFIX 16 - Toggle switch, square collar, alignable without gaps	2 - 38
<b>RAFIX 16 - Potentiometer drive</b>	<b>2 - 40</b>
RAFIX 16 - Potentiometer drive, square collar	2 - 41
RAFIX 16 - Potentiometer drive, round collar	2 - 41
RAFIX 16 - Potentiometer drive, square collar, alignable without gaps	2 - 41
<b>Control components</b>	<b>2 - 3</b>

<b>RAFIX 16 - Buzzer</b>	<b>2 - 42</b>
RAFIX 16 - Buzzer, square collar	2 - 43
RAFIX 16 - Buzzer, round collar	2 - 43
RAFIX 16 - Buzzer, square collar, alignable without gaps	2 - 43
<b>RAFIX 16 - Signal indicator</b>	<b>2 - 44</b>
RAFIX 16 - Signal indicator, square lens	2 - 45
RAFIX 16 - Signal indicator, square collar, flush lens	2 - 46
RAFIX 16 - Signal indicator, square collar, protruding lens	2 - 46
RAFIX 16 - Signal indicator, round lens	2 - 47
RAFIX 16 - Signal indicator, round collar, flush lens	2 - 47
RAFIX 16 - Signal indicator, round collar, protruding lens	2 - 48
RAFIX 16 - Signal indicator, square collar, alignable without gaps, flush lens	2 - 48
RAFIX 16 - Signal indicator, square collar, alignable without gaps, protruding lens	2 - 49
<b>RAFIX 16 F - Pushbutton</b>	<b>2 - 52</b>
RAFIX 16 F - Pushbutton, flush lens, square black collar	2 - 54
RAFIX 16 F - Pushbutton, flush lens, round black collar	2 - 55
RAFIX 16 F - Pushbutton, flush lens, round metallized collar <b>NEW</b>	2 - 56
<b>RAFIX 16 F - Selector switch</b>	<b>2 - 58</b>
RAFIX 16 F - Selector switch, square black collar	2 - 60
RAFIX 16 F - Selector switch, round black collar	2 - 61
RAFIX 16 F - Selector switch, round metallized collar <b>NEW</b>	2 - 62
<b>RAFIX 16 F - Keylock switch MICROMECC</b>	<b>2 - 64</b>
RAFIX 16 F - Keylock switch MICROMECC, square black collar	2 - 65
RAFIX 16 F - Keylock switch MICROMECC, round black collar	2 - 66
RAFIX 16 F - Keylock switch MICROMECC, round metallized collar <b>NEW</b>	2 - 66
<b>RAFIX 16 F - Emergency stop pushbutton</b>	<b>2 - 68</b>
RAFIX 16 F - Emergency stop pushbutton, square collar	2 - 69
RAFIX 16 F - Emergency stop pushbutton, round collar	2 - 69
<b>RAFIX 16 F - Signal indicator</b>	<b>2 - 70</b>
RAFIX 16 F - Signal indicator, flush lens, square black collar	2 - 71
RAFIX 16 F - Signal indicator, flush lens, round black collar	2 - 72
RAFIX 16 F - Signal indicator, flush lens, round metallized collar <b>NEW</b>	2 - 72
<b>RAFIX 16 - Contact blocks with gold contacts</b>	<b>2 - 74</b>
RAFIX 16 - Standard contact block, gold contacts, with quick-connect terminals	2 - 76
RAFIX 16 - Standard contact block, gold contacts, with screw terminals <b>NEW</b>	2 - 77
RAFIX 16 - Universal contact block, gold contacts, with quick-connect terminals	2 - 78
RAFIX 16 - Universal contact block, gold contacts, with screw terminals <b>NEW</b>	2 - 79
<b>RAFIX 16 - Contact blocks with silver contacts</b>	<b>2 - 80</b>
RAFIX 16 - Standard contact block, silver contacts, with quick-connect terminals	2 - 82
RAFIX 16 - Standard contact block, silver contacts, with screw terminals <b>NEW</b>	2 - 83
RAFIX 16 - Universal contact block, silver contacts, with quick-connect terminals	2 - 84
RAFIX 16 - universal contact block, silver contacts, with screw terminals <b>NEW</b>	2 - 85
<b>RAFIX 16 - Contact blocks AS-Interface, standard</b>	<b>2 - 86</b>
RAFIX 16 - Contact block AS-I, standard with lamp socket	2 - 87
RAFIX 16 - Contact block AS-I, standard without lamp socket	2 - 87
RAFIX 16 - Contact blocks AS-Interface, E-stop, Safety at Work	2 - 88
RAFIX 16 - Contact block AS-I, E-stop, Safety at Work	2 - 89
<b>RAFIX 16 - Lamp socket</b>	<b>2 - 90</b>
RAFIX 16 - Lamp socket W 2 x 4.6 d	2 - 91
<b>RAFIX 16 - Special accessories</b>	<b>2 - 92</b>
PCB plug-in socket	2 - 92
Multipole connector	2 - 93
Female quick-connect terminal DIN 46340-B 2.8-1-MS	2 - 93
Plug distributor	2 - 93
Protection against contact	2 - 94
Disassembly tool	2 - 94
Protective cover, suitable for lead seal, for pushbuttons, alignable without gaps	2 - 94
Fixing spanner for hexagon nut	2 - 95
RAFIX - Insulating housing, Ø 16.2 mm	2 - 95
RAFIX 22 QR - Insulating housing IP65, Ø 22.3 mm	2 - 96
RAFIX 16 - Label holder, flush, for square collar	2 - 96
RAFIX 16 - Label holder, flush, for round collar	2 - 97
RAFIX 16 - Label holder, protruding, for square flush fitting collar	2 - 97
Emergency stop label, yellow, round 60 mm, PVC adhesive	2 - 98
Emergency stop label, Ø 22.3 mm	2 - 99
Blanking cap with sealing and threaded ring, Ø 16.2 mm	2 - 100
RAFIX 16 F - Blanking cap	2 - 100

# General information

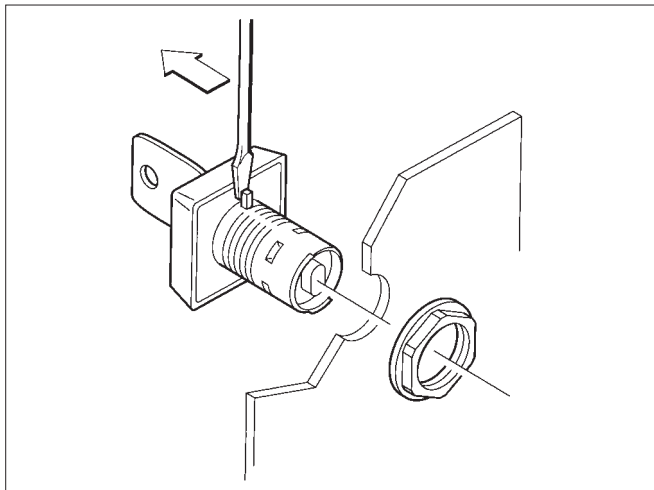
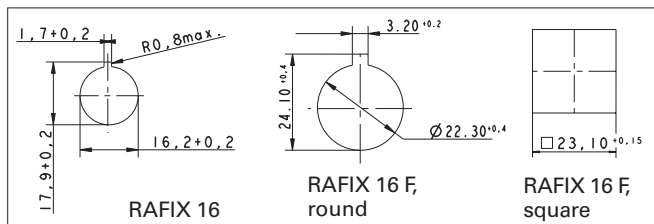
RAFIX 16 is a complete control component series and enables you to design attractive control panels with a minimum of space requirements and at the same time sufficiently large actuating areas.



RAFIX 16 F, round

## Actuators

Mounting hole according to IEC 60947



- Locating lug (easily removable).  
The locating lug can be easily removed using a screwdriver.
- Degree of protection IP65 on frontside of the panel.  
This is achieved by a reliable, tried and tested special seal.

RAFIX 16 actuators

- Grid spacing 25 x 25 mm (RAFIX 16 F 30 x 30 mm)
- 7 mm height from front panel (RAFIX 16 F 1.9 mm)
- Three collar shapes, in black
  - Square
  - Round
  - Square, alignable in flush fitting rows, which avoids accumulation of dirt between the collars.

## Contact blocks

- Standard: for actuators with one-way operation
  - latching function
  - momentary function
- Universal: for E-stop pushbuttons and for actuators with two-way operation, e. g. selector switches
  - momentary function
- AS-Interface

## Contact material

- Silver contacts for mains voltage
- Gold contacts for electronic circuits

## Illumination

- Wedge base lamp or LED, socket W 2 x 4.6 d

## Assembly

- Single-handed cost-effective assembly method
- Panel thickness 0.5 ... 5 mm (RAFIX 16 F 0.5 ... 3.5 mm)
- Fixing with hexagon nut
- Starting torque 1.2 Nm max.

## Shock-resistance according to IEC 600 68-2-27

- Shock amplitude:  $\leq 50$  g
- Shock time: 11 ms
- Shock type: half sinusoidal

## Environment conditions

- acc. to IEC 600 68-2, -14, -30, -33 and -78

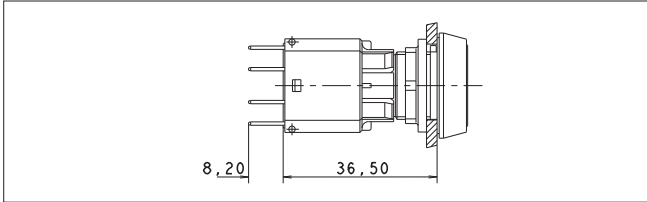
## Temperature range

- Operating temperature:
  - non-illuminated: - 25 ... + 70 °C
  - illuminated: - 25 ... + 55 °C
- Storage temperature: - 40 ... + 85 °C

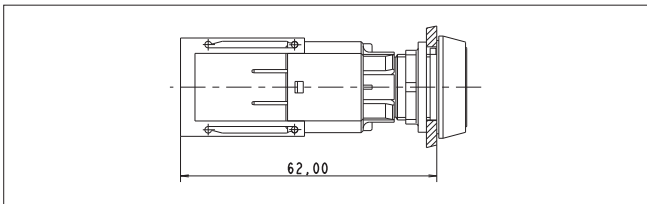
**Dimensional Drawings RAFIX 16**

Actuator with contact block resp. signal indicator with lamp socket

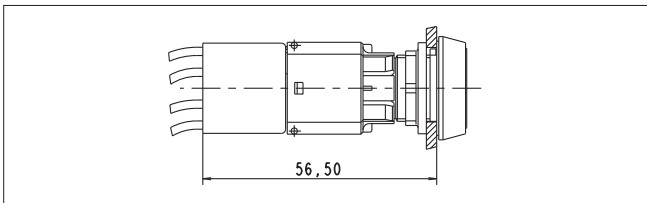
Contact block with quick-connect terminals and RAFIX 16 pushbutton



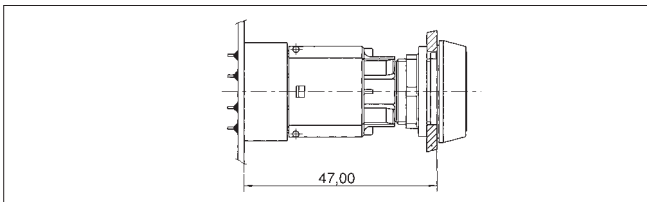
... with protection cage



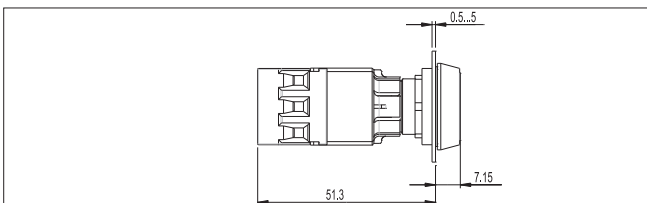
... with multipole connector



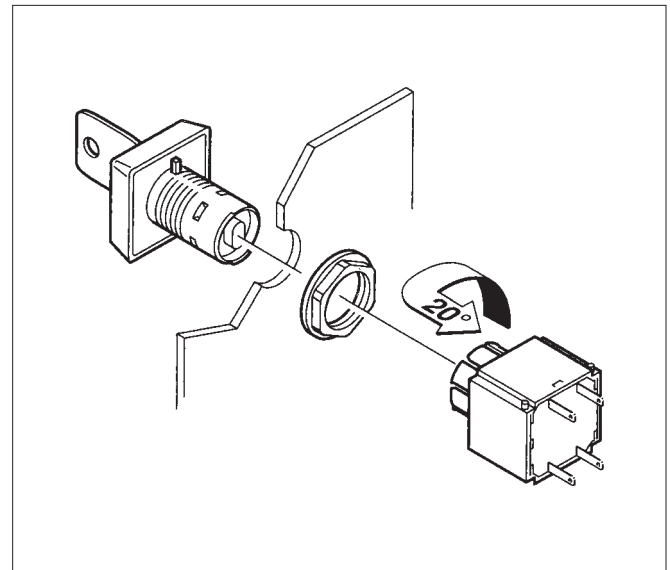
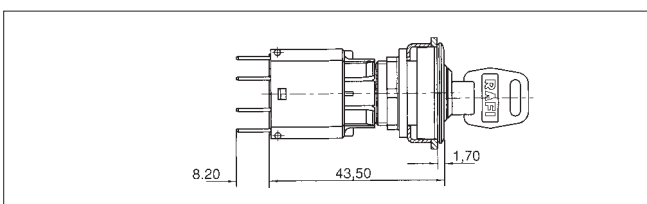
... with PCB plug-in socket



Contact block with screw terminals and RAFIX 16 pushbutton



Contact block with quick-connect terminals and RAFIX 16 F keylock switch



Assembly/Disassembly

**Assembly**

- Insert the actuator through the panel cut-out from the front.
- If there is no locating indent provided in the cut-out, first remove the locating lug using a screwdriver.
- Screw the hexagon nut onto the actuator or signal indicator from the rear and tighten it using a fixing spanner.
- Click the contact block onto the actuator from the rear.
- Install protection against accidental contact, if applicable.

**With quick-connect terminals**

Contact cables with quick connector

**With screw terminals**

Push in cables and fix by screwing

**Disassembly**

- Turn the contact block by approx. 20° to the left or right – the latches open.
  - Pull the contact block off towards the rear.
- To dismount a PCB, pull the PCB with the soldered plug-in sockets off the mounted contact blocks.

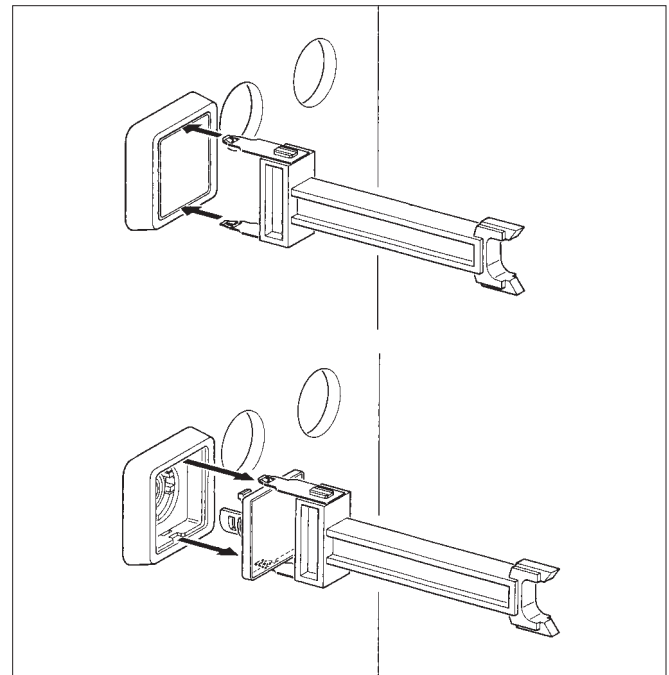
**Legending**

- **Label holders**  
All elements can be labelled using a separate label holder. The label holder is mounted together with the actuator/signal indicator. For order numbers and standard legend, refer to the section "Legending".
- **Lenses**  
Non-illuminated push-buttons and mushroom-headed pushbuttons can be printed or laser engraved.
- **Legend inserts**  
All illuminated pushbuttons and the majority of the signal indicators can be labelled by means of legend inserts. The legend inserts are fitted between actuator body and lens and can be easily changed.

RAFI can also provide you custom legending. Price and delivery on request.

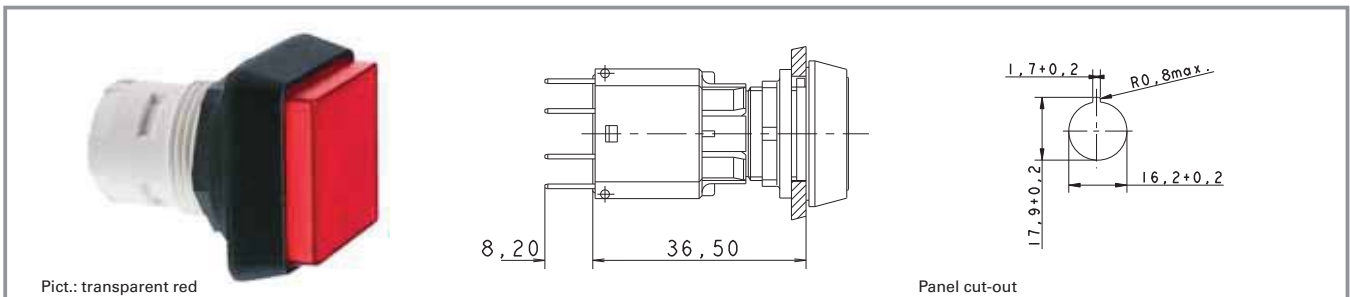
**Lamp replacement from front**

Use the disassembly tool to grasp the actuator body and pull it towards the front with the lens. Alternatively, you can use a screwdriver in place of the disassembly tool. In this case, insert the screwdriver between actuator body and collar and carefully raise the actuator body. Replace the lamp using a lamp extractor or a suitable insulation sleeve.



Lamp replacement from front

## RAFIX 16 - Pushbutton



2

RAFIX 16

### Technical Data

#### General information

Actuator	see order block
Colour of lens	see order block
Form of collar	see order block

#### Dimensions

Collar dimensions	see order block
Overall height	see order block
Mounting depth	44.7 mm
Mounting hole	16.2 mm
Key grid	25 x 25 mm

#### Mechanical design

Mounting	ring nut
Contact function	according to contact block
Contact arrangement	according to contact block
Illumination	see order block

#### Mechanical characteristics

Operating travel	3 mm
Robustness min.	100 N

#### Other specifications

Operating life (operations)	2,000,000
Degree of protection from front side	IP65
Operation temperature min.	-25 °C
Ambient temp. operating max. without lamp /LED	+70 °C
Ambient temp. operating max. with lamp /LED	+55 °C
Storage temperature min.	-40 °C
Storage temperature max.	+85 °C
Environmental resistance	acc. to IEC 60068-2 -14, -30, -33 and -78

#### Approvals



IEC 61058








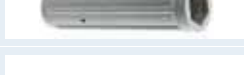



C22.2 No. 14-M91

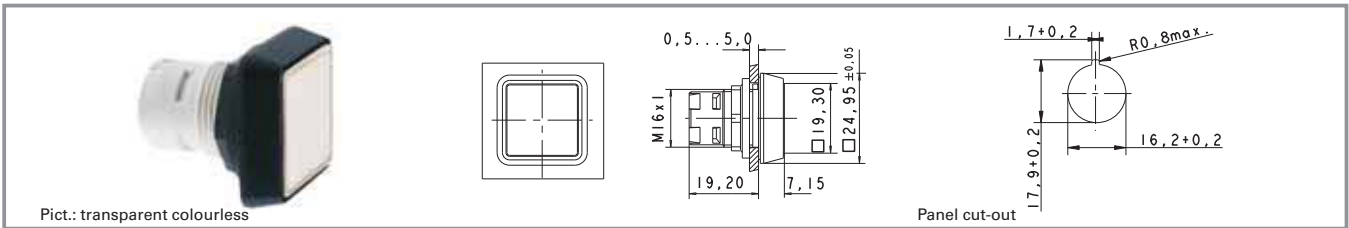
### Typical accessories RAFIX 16 - Pushbutton

Description	Photo	Order no.	Additional accessories see page
RAFIX 16 - Standard contact block, 1 NC + 1 NO, momentary, silver contacts, with lamp socket		<b>1.20.122.001/0000</b>	2 - 82
RAFIX 16 - Standard contact block, 1 NC + 1 NO, momentary, gold contacts, with lamp socket		<b>1.20.122.011/0000</b>	2 - 76
RAFIX 16 - Standard contact block, 1 NC + 1 NO, momentary, silver contacts, without lamp socket		<b>1.20.122.021/0000</b>	2 - 82

## Typical accessories RAFIX 16 - Pushbutton

Description	Photo	Order no.	Additional accessories see page
RAFIX 16 - Standard contact block, 1 NC + 1 NO, momentary, gold contacts, without lamp socket		<b>1.20.122.031/0000</b>	2 - 76
RAFIX 16 - Standard contact block, silver contacts, with lamp socket, screw terminals		<b>1.20.122.101/0000</b>	2 - 83
RAFIX 16 - Standard contact block, gold contacts, with lamp socket, screw terminals		<b>1.20.122.111/0000</b>	2 - 77
RAFIX 16 - Contact block AS-I, standard		1.20.130.101/0000	2 - 87
LED W 2 x 4.6d superbright, white, 24 V		<b>1.90.690.365/0000</b>	5 - 14
Disassembly tool for LUMOTAST 25, RAFIX 16		<b>5.05.800.042/0000</b>	2 - 94
Label holder, flush, for square collar		<b>5.07.620.004/0000</b>	2 - 96
Fixing spanner for hexagon nut		<b>5.58.002.034/0000</b>	2 - 95
Legend insert, blank, use only for transparent lenses		<b>5.70.635.000/2000</b>	

## RAFIX 16 - Pushbutton, flush lens, square collar



Illumination	Colour of lens	Order no. complete	Order no. single parts	
			Housing	Lens
yes	transparent colourless	<b>1.30.070.001/1002</b>	1.30.070.501/0000	5.49.077.011/1002
yes	transparent red	<b>1.30.070.001/1306</b>	1.30.070.501/0000	5.49.077.011/1306
yes	transparent yellow	<b>1.30.070.001/1403</b>	1.30.070.501/0000	5.49.077.011/1403
yes	transparent green	<b>1.30.070.001/1505</b>	1.30.070.501/0000	5.49.077.011/1505
yes	transparent blue	<b>1.30.070.001/1607</b>	1.30.070.501/0000	5.49.077.011/1607
no	opaque black	<b>1.30.070.251/0100</b>	1.30.070.501/0000	5.49.077.011/0104
no	opaque white	<b>1.30.070.251/0200</b>	1.30.070.501/0000	5.49.077.011/0200
no	opaque red	<b>1.30.070.251/0300</b>	1.30.070.501/0000	5.49.077.011/0313
no	opaque yellow	<b>1.30.070.251/0400</b>	1.30.070.501/0000	5.49.077.011/0410
no	opaque green	<b>1.30.070.251/0500</b>	1.30.070.501/0000	5.49.077.011/0518
no	opaque blue	<b>1.30.070.251/0600</b>	1.30.070.501/0000	5.49.077.011/0612

Technical data see page 2 - 8

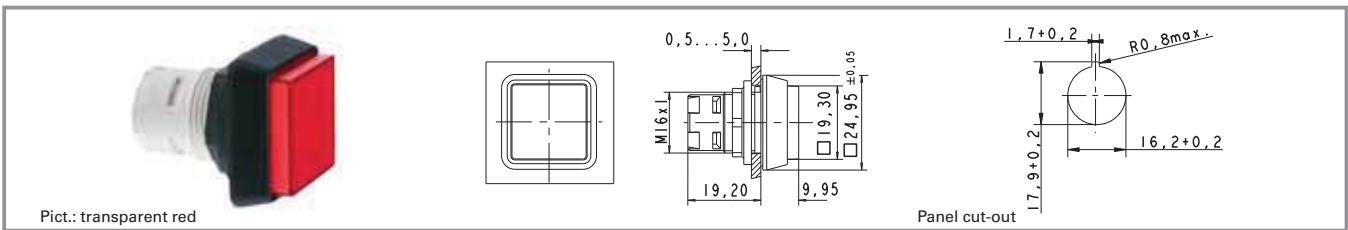
**Accessoires:**

Legend insert, blank, use only for transparent lenses: **5.70.635.000/2000**

For the „latching“ function, please use the standard contact block with „latching“ function.



## RAFIX 16 - Pushbutton, protruding lens, square collar



Illumination	Colour of lens	Order no. complete	Order no. single parts	
			Housing	Lens
yes	transparent colourless	1.30.070.051/1002	1.30.070.551/0000	5.49.077.012/1002
yes	transparent red	1.30.070.051/1306	1.30.070.551/0000	5.49.077.012/1306
yes	transparent yellow	1.30.070.051/1403	1.30.070.551/0000	5.49.077.012/1403
yes	transparent green	1.30.070.051/1505	1.30.070.551/0000	5.49.077.012/1505
yes	transparent blue	1.30.070.051/1607	1.30.070.551/0000	5.49.077.012/1607
no	opaque black	1.30.070.301/0100	1.30.070.801/0000	5.46.657.442/0100
no	opaque red	1.30.070.301/0300	1.30.070.801/0000	5.46.657.442/0300

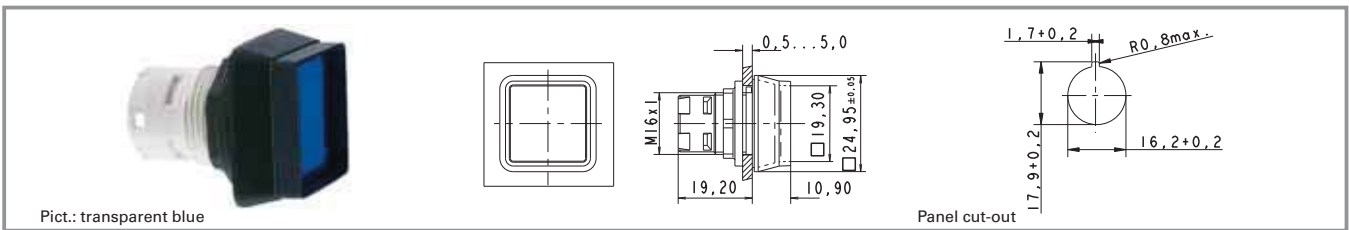
Technical data see page 2 - 8

**Accessoires:**

Legend insert, blank, use only for transparent lenses: **5.70.635.000/2000**

For the „latching“ function, please use the standard contact block with „latching“ function.

## RAFIX 16 - Pushbutton, protruding collar, square collar



Illumination	Colour of lens	Order no. complete	Order no. single parts	
			Housing	Lens
yes	transparent colourless	1.30.070.101/1002	1.30.070.601/0000	5.49.077.011/1002
yes	transparent red	1.30.070.101/1306	1.30.070.601/0000	5.49.077.011/1306
yes	transparent yellow	1.30.070.101/1403	1.30.070.601/0000	5.49.077.011/1403
yes	transparent green	1.30.070.101/1505	1.30.070.601/0000	5.49.077.011/1505
yes	transparent blue	1.30.070.101/1607	1.30.070.601/0000	5.49.077.011/1607

Technical data see page 2 - 8

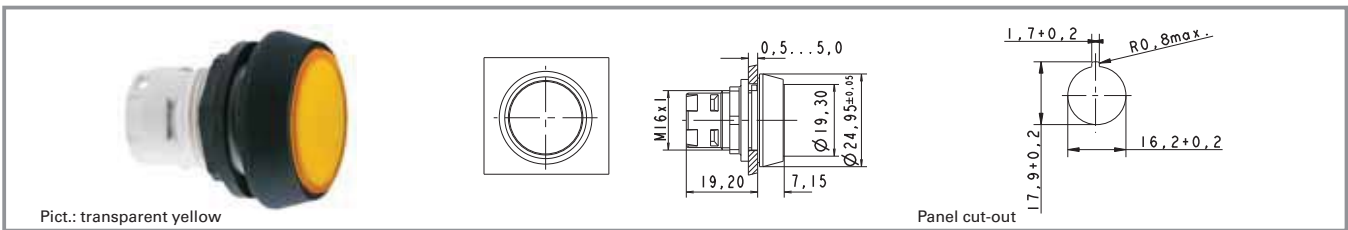
### Accessoires:

Legend insert, blank, use only for transparent lenses: **5.70.635.000/2000**

The protruding collar offers protection against inadvertent operation and thereby fulfils the safety requirements of various machinery manufacturers.

For the „latching“ function, please use the standard contact block with „latching“ function.

## RAFIX 16 - Pushbutton, flush lens, round collar



Illumination	Colour of lens	Order no. complete	Order no. single parts	
			Housing	Lens
yes	transparent colourless	<b>1.30.070.021/1002</b>	1.30.070.521/0000	5.49.259.017/1002
yes	transparent red	<b>1.30.070.021/1306</b>	1.30.070.521/0000	5.49.259.017/1306
yes	transparent yellow	<b>1.30.070.021/1403</b>	1.30.070.521/0000	5.49.259.017/1403
yes	transparent green	<b>1.30.070.021/1505</b>	1.30.070.521/0000	5.49.259.017/1505
yes	transparent blue	<b>1.30.070.021/1607</b>	1.30.070.521/0000	5.49.259.017/1607
no	opaque black	<b>1.30.070.271/0100</b>	1.30.070.521/0000	5.49.259.017/0104
no	opaque white	<b>1.30.070.271/0200</b>	1.30.070.521/0000	5.49.259.017/0200
no	opaque red	<b>1.30.070.271/0300</b>	1.30.070.521/0000	5.49.259.017/0313
no	opaque yellow	<b>1.30.070.271/0400</b>	1.30.070.521/0000	5.49.259.017/0410
no	opaque green	<b>1.30.070.271/0500</b>	1.30.070.521/0000	5.49.259.017/0518
no	opaque blue	<b>1.30.070.271/0600</b>	1.30.070.521/0000	5.49.259.017/0612

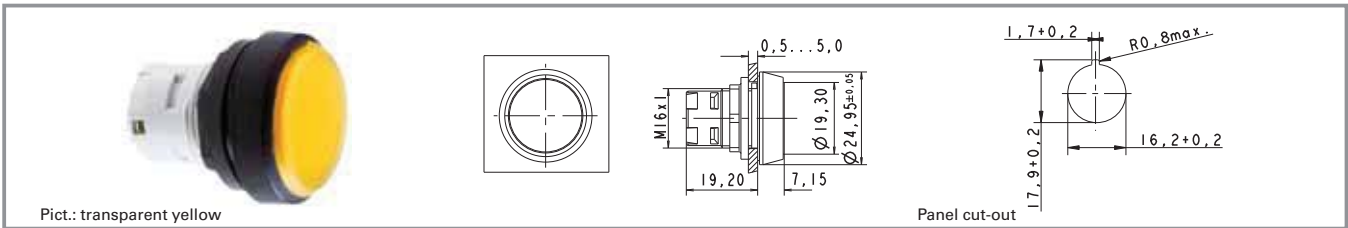
Technical data see page 2 - 8

**Accessoires:**

Legend insert, blank, use only for transparent lenses: **5.70.637.000/2000**

For the „latching“ function, please use the standard contact block with „latching“ function.

## RAFIX 16 - Pushbutton IP66 with protective cap



Illumination	Colour of lens	Order no. complete	Order no. single parts	
			Housing	Lens
yes	transparent colourless	1.30.070.026/1002	-	-
yes	transparent red	1.30.070.026/1306	-	-
yes	transparent yellow	1.30.070.026/1403	-	-
yes	transparent green	1.30.070.026/1505	-	-
yes	transparent blue	1.30.070.026/1607	-	-

Technical data see page 2 - 8

### Accessoires:

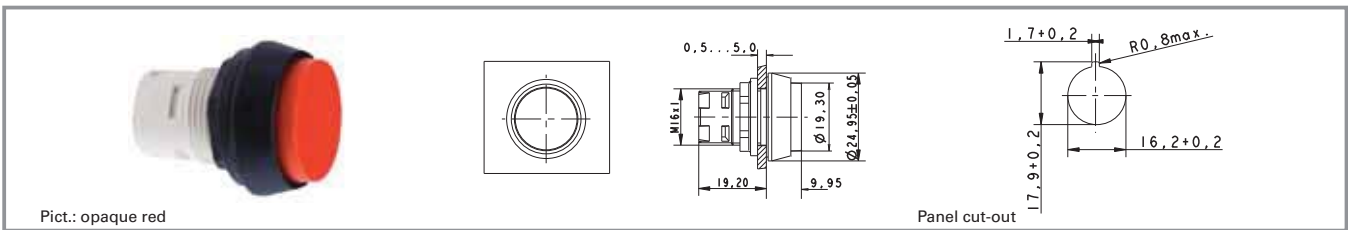
Legend insert, blank, use only for transparent lenses: **5.70.637.000/2000**

Pushbutton for use in hostile environments. A transparent protective cap ensures a degree of protection of IP 66 to DIN/IEC.

Operating life: 500,000 operations.

For the „latching“ function, please use the standard contact block with „latching“ function.

## RAFIX 16 - Pushbutton, protruding lens, round collar



Illumination	Colour of lens	Order no. complete	Order no. single parts	
			Housing	Lens
yes	transparent colourless	1.30.070.071/1002	1.30.070.571/0000	5.49.259.018/1002
yes	transparent red	1.30.070.071/1306	1.30.070.571/0000	5.49.259.018/1306
yes	transparent yellow	1.30.070.071/1403	1.30.070.571/0000	5.49.259.018/1403
yes	transparent green	1.30.070.071/1505	1.30.070.571/0000	5.49.259.018/1505
yes	transparent blue	1.30.070.071/1607	1.30.070.571/0000	5.49.259.018/1607
no	opaque black	1.30.070.321/0100	-	-
no	opaque red	1.30.070.321/0300	-	-

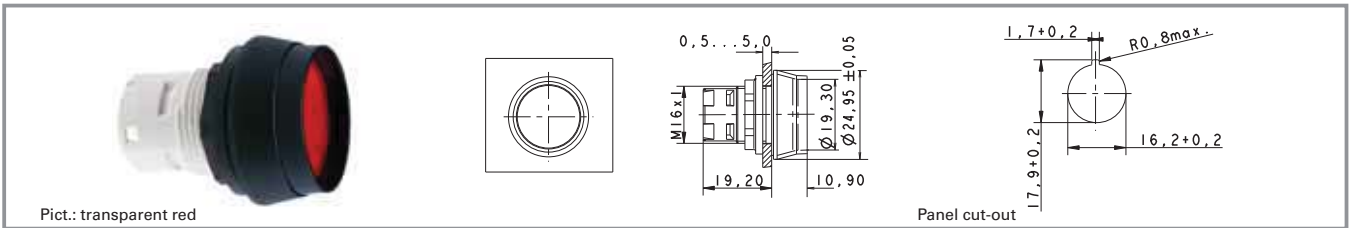
Technical data see page 2 - 8

**Accessoires:**

Legend insert, blank, use only for transparent lenses: **5.70.637.000/2000**

For the „latching“ function, please use the standard contact block with „latching“ function.

## RAFIX 16 - Pushbutton, protruding collar, round collar



Illumination	Colour of lens	Order no. complete	Order no. single parts	
			Housing	Lens
yes	transparent colourless	1.30.070.121/1002	1.30.070.621/0000	5.49.259.017/1002
yes	transparent red	1.30.070.121/1306	1.30.070.621/0000	5.49.259.017/1306
yes	transparent yellow	1.30.070.121/1403	1.30.070.621/0000	5.49.259.017/1403
yes	transparent green	1.30.070.121/1505	1.30.070.621/0000	5.49.259.017/1505
yes	transparent blue	1.30.070.121/1607	1.30.070.621/0000	5.49.259.017/1607

Technical data see page 2 - 8

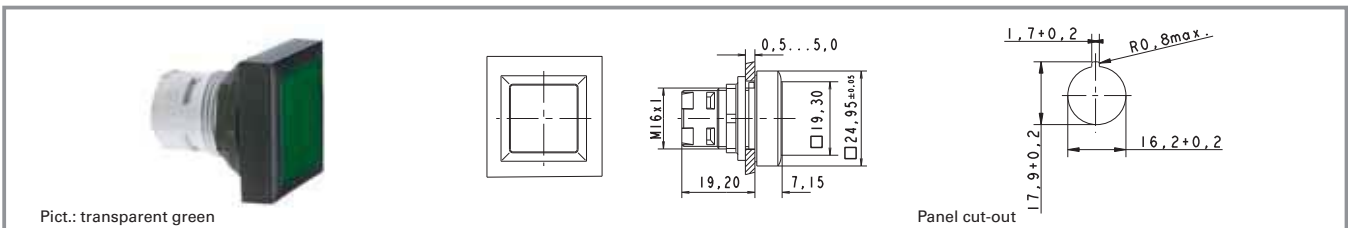
**Accessoires:**

Legend insert, blank, use only for transparent lenses: **5.70.637.000/2000**

The protruding collar offers protection against inadvertent operation and thereby fulfils the safety requirements of various machinery manufacturers.

For the „latching“ function, please use the standard contact block with „latching“ function.

## RAFIX 16 - Pushbutton, flush lens, square collar, alignable without gaps



Illumination	Colour of lens	Order no. complete	Order no. single parts	
			Housing	Lens
yes	transparent colourless	<b>1.30.070.201/1002</b>	1.30.070.701/0000	5.49.077.011/1002
yes	transparent red	<b>1.30.070.201/1306</b>	1.30.070.701/0000	5.49.077.011/1306
yes	transparent yellow	<b>1.30.070.201/1403</b>	1.30.070.701/0000	5.49.077.011/1403
yes	transparent green	<b>1.30.070.201/1505</b>	1.30.070.701/0000	5.49.077.011/1505
yes	transparent blue	<b>1.30.070.201/1607</b>	1.30.070.701/0000	5.49.077.011/1607
no	opaque black	<b>1.30.070.451/0100</b>	1.30.070.701/0000	5.49.077.011/0104
no	opaque white	<b>1.30.070.451/0200</b>	1.30.070.701/0000	5.49.077.011/0200
no	opaque red	<b>1.30.070.451/0300</b>	1.30.070.701/0000	5.49.077.011/0313
no	opaque yellow	<b>1.30.070.451/0400</b>	1.30.070.701/0000	5.49.077.011/0410
no	opaque green	<b>1.30.070.451/0500</b>	1.30.070.701/0000	5.49.077.011/0518
no	opaque blue	<b>1.30.070.451/0600</b>	1.30.070.701/0000	5.49.077.011/0612

Technical data see page 2 - 8

**Accessoires:**

Legend insert, blank, use only for transparent lenses: **5.70.635.000/2000**

For the „latching“ function, please use the standard contact block with „latching“ function.

## RAFIX 16 - Selector switch



Pict.: Handle marking opaque white

Handle marking opaque white

Panel cut-out

## 2

### General Data

The illuminated selector switches are provided with translucent handle markings. These are opaque on the non-illuminated versions.

### RAFIX 16

### Technical Data

#### General information

Actuator	handle
Marking of handle	see order block
Form of collar	see order block

#### Dimensions

Collar dimensions	see order block
Overall height	17.1 mm
Mounting depth	44.7 mm
Mounting hole	16.2 mm
Key grid	25 x 25 mm

#### Mechanical design

Mounting	ring nut
Contact function	see order block
Contact arrangement	according to contact block
Illumination	see order block
Rotating angle	see order block

#### Mechanical characteristics

Torque max.	1.3 Nm
-------------	--------

#### Other specifications

Operating life (operations)	30,000
Degree of protection from front side	IP65
Operation temperature min.	-25 °C
Ambient temp. operating max. without lamp /LED	+70 °C
Ambient temp. operating max. with lamp /LED	+55 °C
Storage temperature min.	-40 °C
Storage temperature max.	+85 °C
Environmental resistance	acc. to IEC 60068-2 -14, -30, -33 and -78

#### Approvals



IEC 61058



C22.2 No. 14-M91

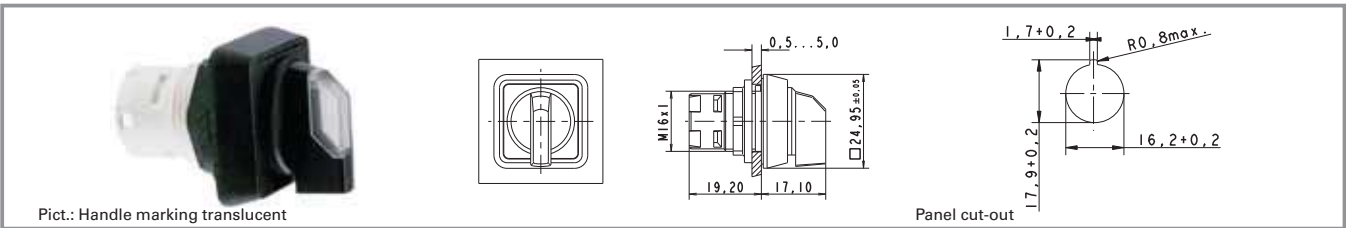


## Typical accessories RAFIX 16 - Selector switch

Description	Photo	Order no.	Additional accessories see page
RAFIX 16 - Universal contact block, 1 NC + 1 NO, momentary, silver contacts, with lamp socket		<b>1.20.123.001/0000</b>	2 - 84
RAFIX 16 - Universal contact block, 1 NC + 1 NO, momentary, gold contacts, with lamp socket		<b>1.20.123.011/0000</b>	2 - 78
RAFIX 16 - Universal contact block, gold contacts, with lamp socket, screw terminals		<b>1.20.123.111/0000</b>	2 - 79
RAFIX 16 - Universal contact block, silver contacts, without lamp socket, screw terminals		<b>1.20.123.121/0000</b>	2 - 85
Label holder, flush, for square collar		<b>5.07.620.004/0000</b>	2 - 96
Fixing spanner for hexagon nut		<b>5.58.002.034/0000</b>	2 - 95

For suitable LEDs, filament lamps and other contact blocks, refer to the chapter „RAFIX 16 contact blocks“; for additional accessories, refer to the chapter „RAFIX 16 special accessories“.

## RAFIX 16 - Selector switch, square collar

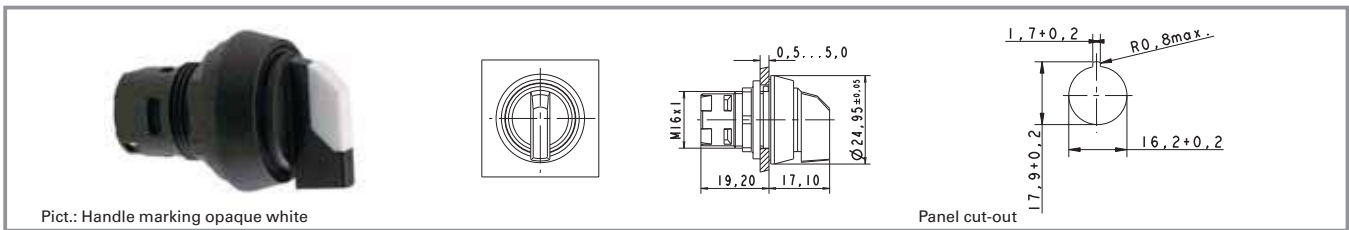


illumination	Contact function	Rotating angle	Marking of handle	Order no.
yes	momentary	1 x 40°		translucent white 1.30.073.551/2000
yes	momentary	2 x 40°		translucent white 1.30.073.651/2000
yes	latching	1 x 90°, Form L		translucent white 1.30.073.501/2000
yes	latching	1 x 90°, Form V		translucent white 1.30.073.601/2000
yes	latching	2 x 60°		translucent white 1.30.073.701/2000
no	momentary	1 x 40°		opaque white 1.30.073.550/0200
no	momentary	2 x 40°		opaque white 1.30.073.650/0200
no	latching	1 x 90°, Form L		opaque white 1.30.073.500/0200
no	latching	1 x 90°, Form V		opaque white 1.30.073.600/0200
no	latching	2 x 60°		opaque white 1.30.073.700/0200

Technical data see page 2 - 18

Only use contact blocks with „momentary“ contact function.  
 For versions with clockwise and counterclockwise rotation, use universal contact blocks only!  
 Other contact functions and handle marking colours available on request.  
 For coloured illumination of the handle marking please use contact block with lamp socket and coloured LED W 2 x 4,6d (see chapter 5 accessories).

## RAFIX 16 - Selector switch, round collar



Pict.: Handle marking opaque white

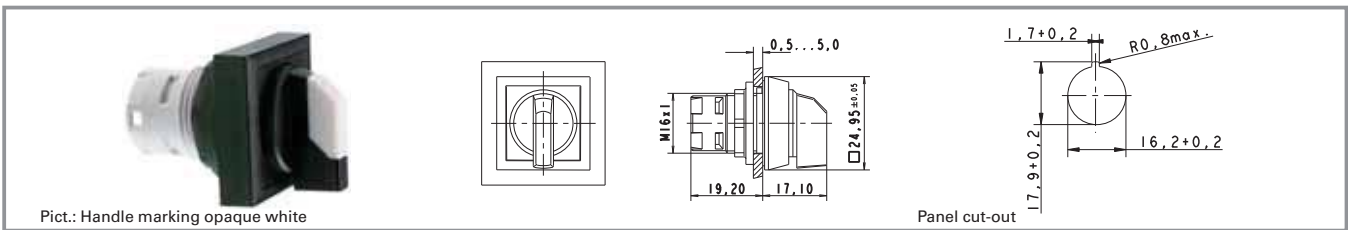
Panel cut-out

illumination	Contact function	Rotating angle		Marking of handle	Order no.
yes	momentary	1 x 40°		translucent white	1.30.073.571/2000
yes	momentary	2 x 40°		translucent white	1.30.073.671/2000
yes	latching	1 x 90°, form L		translucent white	1.30.073.521/2000
yes	latching	1 x 90°, form V		translucent white	1.30.073.621/2000
yes	latching	2 x 60°		translucent white	1.30.073.721/2000
no	momentary	1 x 40°		opaque white	1.30.073.570/0200
no	momentary	2 x 40°		opaque white	1.30.073.670/0200
no	latching	1 x 90°, form L		opaque white	1.30.073.520/0200
no	latching	1 x 90°, form V		opaque white	1.30.073.620/0200
no	latching	2 x 60°		opaque white	1.30.073.720/0200

Technical data see page 2 - 18

Only use contact blocks with „momentary“ contact function.  
 For versions with clockwise and counterclockwise rotation, use universal contact blocks only!  
 Other contact functions and handle marking colours available on request.  
 For coloured illumination of the handle marking please use contact block with lamp socket and coloured LEDW 2 x 4,6d (see chapter 5 accessories).

## RAFIX 16 - Selector switch, square collar, alignable without gaps



Pict.: Handle marking opaque white

Panel cut-out

illumination	Contact function	Rotating angle		Marking of handle	Order no.
yes	momentary	1 x 40°		translucent white	1.30.073.591/2000
yes	momentary	2 x 40°		translucent white	1.30.073.691/2000
yes	latching	1 x 90°, form L		translucent white	1.30.073.541/2000
yes	latching	1 x 90°, form V		translucent white	1.30.073.641/2000
yes	latching	2 x 60°		translucent white	1.30.073.741/2000
no	momentary	1 x 40°		opaque white	1.30.073.590/0200
no	momentary	2 x 40°		opaque white	1.30.073.690/0200
no	latching	1 x 90°, form L		opaque white	1.30.073.540/0200
no	latching	1 x 90°, form V		opaque white	1.30.073.640/0200
no	latching	2 x 60°		opaque white	1.30.073.740/0200

Technical data see page 2 - 18

Only use contact blocks with „momentary“ contact function.

For versions with clockwise and counterclockwise rotation, use universal contact blocks only!

Other contact functions and handle marking colours available on request.

For coloured illumination of the handle marking please use contact block with lamp socket and coloured LED W 2 x 4,6d (see chapter 5 accessories).



## RAFIX 16 - Keylock switch MICROMECC



2

### Technical Data

#### General information

Form of collar see order block

#### Dimensions

Collar dimensions see order block  
 Overall height 27.95 mm  
 Mounting depth 44.7 mm  
 Mounting hole 16.2 mm  
 Key grid 25 x 25 mm

#### Mechanical design

Mounting ring nut  
 Contact function see order block  
 Contact arrangement according to contact block  
 Illumination no  
 Lock Micromec  
 Wafers 5  
 Lock type 001  
 Number of locking positions 500  
 Main key on request  
 Rotating angle see order block  
 Key removal position see order block

#### Mechanical characteristics

Torque max. 1.3 Nm

#### Electrical characteristics

Protection class II

#### Other specifications

ESD-strength lock / contact 15 kV  
 ESD strength key/ front panel 8 kV  
 Operating life (operations) 65,000  
 Degree of protection from front side IP65  
 Operation temperature min. -25 °C  
 Ambient temp. operating max. without lamp /LED +70 °C  
 Storage temperature min. -40 °C  
 Storage temperature max. +85 °C  
 Environmental resistance acc. to IEC 60068-2 -14, -30, -33 and -78

#### Approvals



IEC 61058



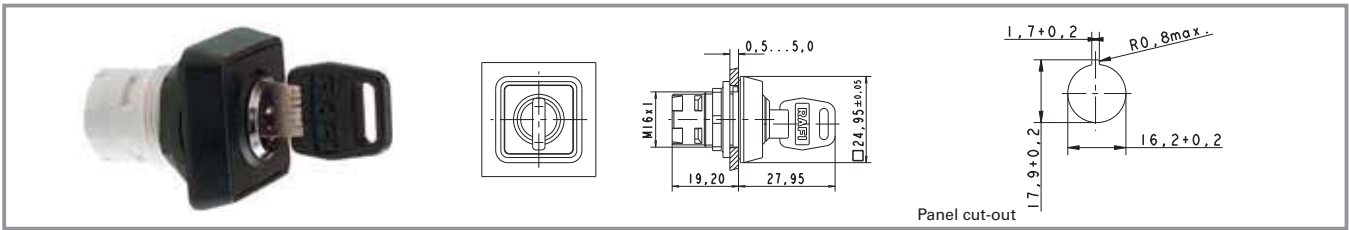
C22.2 No. 14-M91

## Typical accessories RAFIX 16 - Keylock switch MICROMECC

Description	Photo	Order no.	Additional accessories see page
RAFIX 16 - Universal contact block, 1 NC + 1 NO, momentary, silver contacts, without lamp socket		<b>1.20.123.021/0000</b>	2 - 84
RAFIX 16 - Universal contact block, 1 NC + 1 NO, momentary, gold contacts, without lamp socket		<b>1.20.123.031/0000</b>	2 - 78
RAFIX 16 - Universal contact block, gold contacts, with lamp socket, screw terminals		<b>1.20.123.111/0000</b>	2 - 79
RAFIX 16 - Universal contact block, silver contacts, without lamp socket, screw terminals		<b>1.20.123.121/0000</b>	2 - 85
RAFIX 16 - Contact block AS-I, standard		1.20.130.101/0000	2 - 87
Label holder, flush, for square collar		<b>5.07.620.004/0000</b>	2 - 96
Fixing spanner for hexagon nut		<b>5.58.002.034/0000</b>	2 - 95
Spare key, for single action, e.g. 1 x 90° (delivery content 1 key)		5.58.007.001/0000	
Spare key, for double action, e.g. 2 x 90° (delivery content 1 key)		5.58.008.001/0000	

For other contact blocks, refer to the chapter „RAFIX 16 contact blocks“; for additional accessories, refer to the chapter „RAFIX 16 special accessories“

## RAFIX 16 - Keylock switch MICROMECC, square collar



Contact function	Rotating angle	Key removal position		Order no.
momentary	1 x 40°	0		1.30.076.501/0000
momentary	2 x 40°	0		1.30.076.701/0000
latching	1 x 90°, form L	0		1.30.076.001/0000
latching	1 x 90°, form L	0+1		1.30.076.051/0000
latching	1 x 90°, form V	0		1.30.076.101/0000
latching	1 x 90°, form V	0+1		1.30.076.151/0000
latching	2 x 90°	0		1.30.076.301/0000
latching	2 x 90°	0+1+2		1.30.076.401/0000

Technical data see page 2 - 24

Only use contact blocks with „momentary“ contact function. For versions with clockwise and counterclockwise rotation, use universal contact block only.

Other contact functions on request.

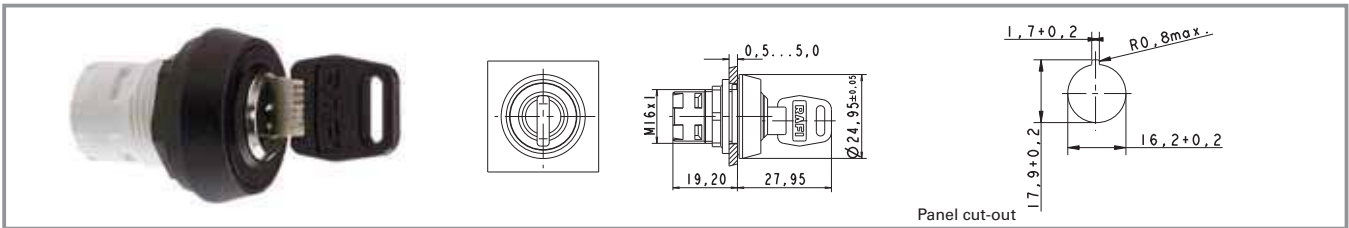
Included: 2 keys

2

RAFIX 16



## RAFIX 16 - Keylock switch MICROMECC, round collar



Contact function	Rotating angle	Key removal position		Order no.
momentary	1 x 40°	0		1.30.076.521/0000
momentary	2 x 40°	0		1.30.076.721/0000
latching	1 x 90°, form L	0		1.30.076.021/0000
latching	1 x 90°, form L	0+1		1.30.076.071/0000
latching	1 x 90°, form V	0		1.30.076.121/0000
latching	1 x 90°, form V	0+1		1.30.076.171/0000
latching	2 x 90°	0		1.30.076.321/0000
latching	2 x 90°	0+1+2		1.30.076.421/0000

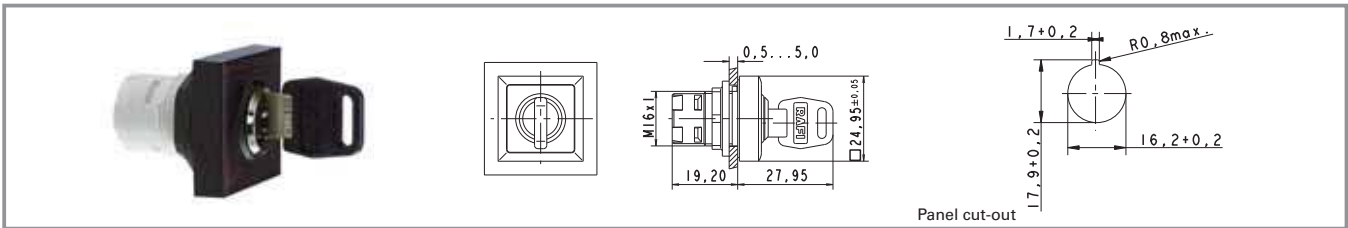
Technical data see page 2 - 24

Only use contact blocks with „momentary“ contact function. For versions with clockwise and counterclockwise rotation, use universal contact block only.

Other contact functions on request.

Included: 2 keys

## RAFIX 16 - Keylock switch MICROMECC, square collar, alignable without gaps



Contact function	Rotating angle	Key removal position		Order no.
momentary	1 x 40°	0		1.30.076.541/0000
momentary	2 x 40°	0		1.30.076.741/0000
latching	1 x 90°, form L	0		1.30.076.041/0000
latching	1 x 90°, form L	0+1		1.30.076.091/0000
latching	1 x 90°, form V	0		1.30.076.141/0000
latching	1 x 90°, form V	0+1		1.30.076.191/0000
latching	2 x 90°	0		1.30.076.341/0000
latching	2 x 90°	0+1+2		1.30.076.441/0000

Technical data see page 2 - 24

Only use contact blocks with „momentary“ contact function. For versions with clockwise and counterclockwise rotation, use universal contact block only.

Other contact functions on request.

Included: 2 keys

2

RAFIX  
16



## RAFIX 16 - Mushroom-headed pushbutton



2

RAFIX 16

### Technical Data

#### General information

Actuator	mushroom
Colour of mushroom	see order block
Form of collar	see order block

#### Dimensions

Collar dimensions	see order block
Overall height	12.1 mm
Mounting depth	44.7 mm
Mounting hole	16.2 mm
Key grid	25 x 25 mm

#### Mechanical design

Mounting	ring nut
Contact function	according to contact block
Contact arrangement	according to contact block
Illumination	no

#### Mechanical characteristics

Operating travel	3 mm
Robustness max.	100 Nm

#### Other specifications

Operating life (operations)	2,000,000
Degree of protection from front side	IP65
Operation temperature min.	-25 °C
Ambient temp. operating max. without lamp /LED	+70 °C
Storage temperature min.	-40 °C
Storage temperature max.	+85 °C
Environmental resistance	acc. to IEC 60068-2 -14, -30, -33 and -78

#### Approvals



IEC 61058



C22.2 No. 14-M91

### Typical accessories RAFIX 16 - Mushroom-headed pushbutton

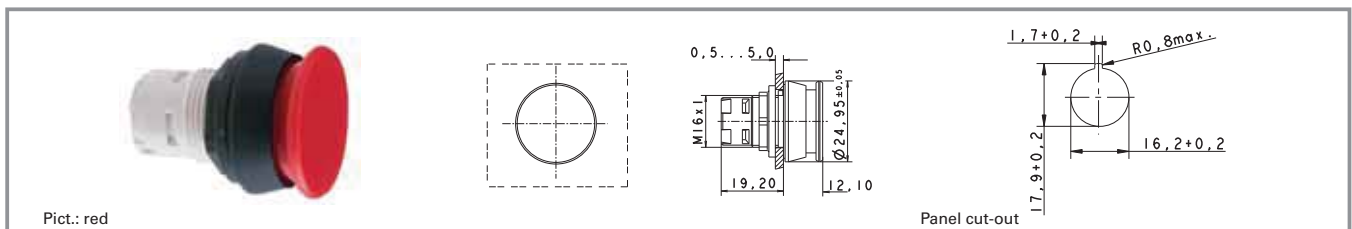
Description	Photo	Order no.	Additional accessories see page
RAFIX 16 - Standard contact block, 1 NC + 1 NO, momentary, silver contacts, without lamp socket		<b>1.20.122.021/0000</b>	2 - 82
RAFIX 16 - Standard contact block, 1 NC + 1 NO, momentary, gold contacts, without lamp socket		<b>1.20.122.031/0000</b>	2 - 76
RAFIX 16 - Standard contact block, silver contacts, without lamp socket, screw terminals		<b>1.20.122.121/0000</b>	2 - 83

## Typical accessories RAFIX 16 - Mushroom-headed pushbutton

Description	Photo	Order no.	Additional accessories see page
RAFIX 16 - Standard contact block, gold contacts, without lamp socket, screw terminals		<b>1.20.122.131/0000</b>	2 - 77
RAFIX 16 - Contact block AS-I, standard		1.20.130.101/0000	2 - 87
Label holder, flush, for square collar		<b>5.07.620.004/0000</b>	2 - 96
Fixing spanner for hexagon nut		<b>5.58.002.034/0000</b>	2 - 95

For other contact blocks, refer to the chapter „RAFIX 16 contact blocks“; for additional accessories, refer to the chapter „RAFIX 16 special accessories“.

## RAFIX 16 - Mushroom-headed pushbutton, round collar



Illumination	Colour of mushroom	Order no.
no	opaque black	1.30.071.021/0100
no	opaque red	1.30.071.021/0300

Technical data see page 2 - 30

For the „latching“ function, please use the standard contact block with „latching“ function.

## RAFIX 16 - Emergency stop pushbutton



Panel cut-out

2

### Technical Data

#### General information

Actuator	mushroom
Colour of mushroom	see order block
Form of collar	see order block

#### Dimensions

Collar dimensions	see order block
Overall height	see order block
Mounting depth	44.7 mm
Mounting hole	16.2 mm

#### Mechanical design

Mounting	ring nut
Contact function	latching
Contact arrangement	according to contact block
Illumination	see order block
Reset	counterclockwise or clockwise rotation

#### Mechanical characteristics

Robustness min.	100 N
Robustness	acc. to IEC 60947-5-5

#### Other specifications

Operating life (operations)	30,000
Degree of protection from front side	IP65
Operation temperature min.	-25 °C
Ambient temp. operating max. without lamp /LED	+70 °C
Ambient temp. operating max. with lamp /LED	+55 °C
Storage temperature min.	-40 °C
Storage temperature max.	+85 °C
Environmental resistance	acc. to IEC 60068-2 -14, -30, -33 and -78 yes
Corresponding to CE Ma-Dir. 89/392	
Dupe-proof acc. to DIN EN ISO 13850	see order block

#### Approvals



IEC 61058



C22.2 No. 14-M91

IEC 60204, IEC 73

### Typical accessories RAFIX 16 - Emergency stop pushbutton

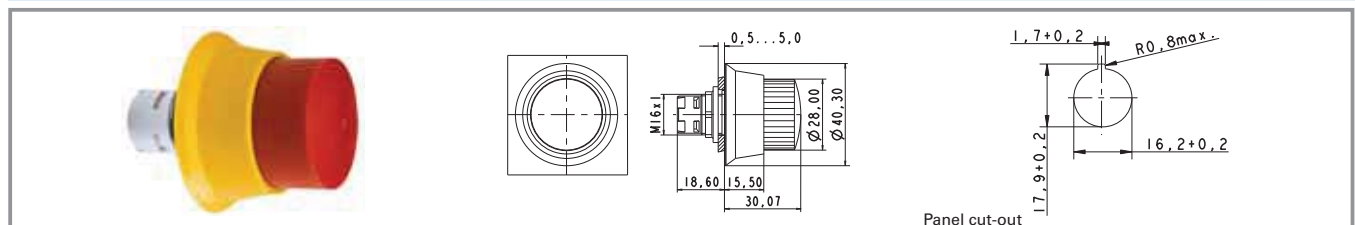
Description	Photo	Order no.	Additional accessories see page
RAFIX 16 - Universal contact block, 1 NC, momentary, silver contacts, without lamp socket		<b>1.20.123.022/0000</b>	2 - 84

## Typical accessories RAFIX 16 - Emergency stop pushbutton

Description	Photo	Order no.	Additional accessories see page
RAFIX 16 - Universal contact block, 1 NC, momentary, gold contacts, without lamp socket		<b>1.20.123.032/0000</b>	2 - 78
RAFIX 16 - Universal contact block, silver contacts, without lamp socket, screw terminals		<b>1.20.123.125/0000</b>	2 - 85
RAFIX 16 - Universal contact block, gold contacts, without lamp socket, screw terminals		<b>1.20.123.135/0000</b>	2 - 79
RAFIX 16 - Contact block AS-I, E-stop, coupling contact		1.20.130.001/0000	2 - 89
Fixing spanner for hexagon nut		<b>5.58.002.034/0000</b>	2 - 95
Adhesive label yellow, round 16.3 / 60 mm, with legend „NOT-HALT, EMERGENCY STOP, ARRET D'URGENCE, EMERGENZA“		5.76.204.106/0400	2 - 98, 5 - 28
Adhesive label yellow, round 16.3 / 40 mm, with legend „NOT-HALT, EMERGENCY STOP, ARRET D'URGENCE, EMERGENZA“		5.76.204.114/0400	2 - 98, 5 - 28
Adhesive label yellow, round 16.3 / 60 mm, without legend		<b>5.76.204.400/0400</b>	2 - 98, 5 - 28

For suitable LEDs, filament lamps and other contact blocks, refer to the chapter „RAFIX 16 contact blocks“; for additional accessories, refer to the chapter „RAFIX 16 special accessories“.

## RAFIX 16 - Safety emergency stop pushbutton, round collar, dupe-proof, non-blocking



Illumination	Colour of mushroom	Order no.
no	opaque red, collar yellow	<b>1.30.074.821/0000</b>

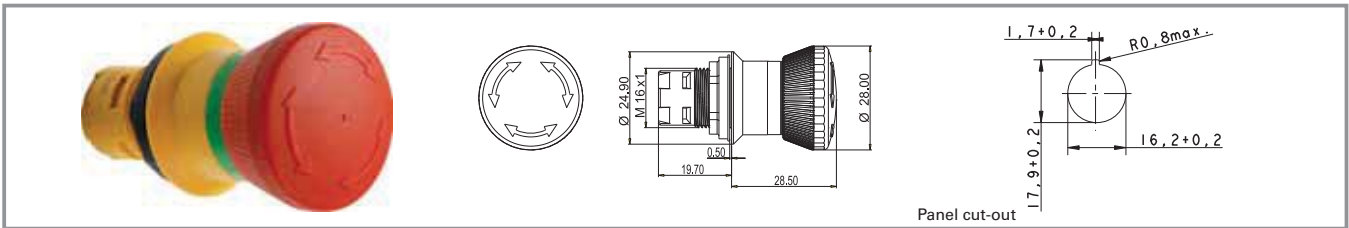
Technical data see page 2 - 32

Only use universal contact blocks.

The positively driven mechanical arrangement is dupe-proof to DIN EN ISO 13850.

Special shape prevents blocking: Actuation cannot be interrupted by any jamming objects.

## RAFIX 16 - Safety emergency stop pushbutton, round collar, conical, dupe-proof, non-blocking



illumination	Colour of mushroom	Order no.
no	opaque red	<b>1.30.074.281/0300</b>

Technical data see page 2 - 32

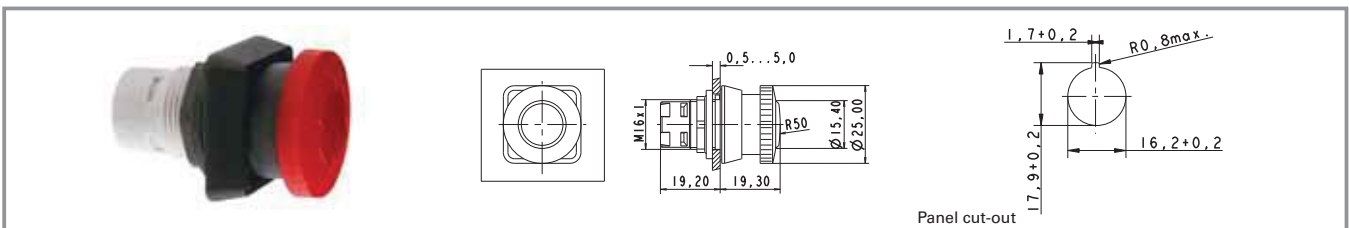
Only use universal contact blocks.

The positively driven mechanical arrangement is dupe-proof to DIN EN ISO 13850.

2

RAFIX 16

## RAFIX 16 - Emergency stop pushbutton, square collar, illuminable

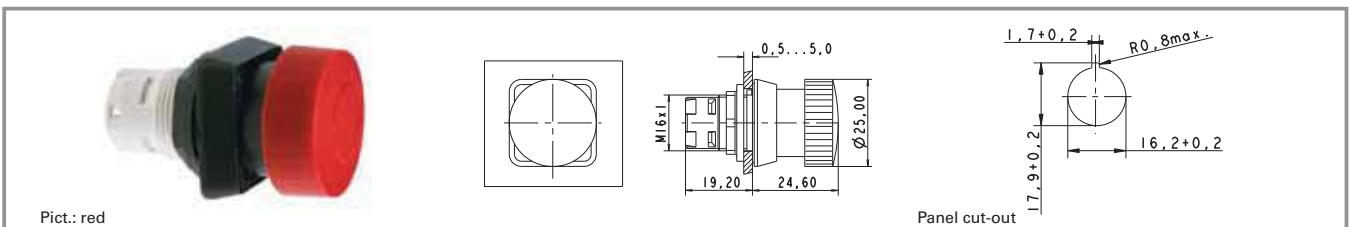


illumination	Colour of mushroom	Order no.
yes	translucent red	<b>1.30.074.501/0304</b>

Technical data see page 2 - 32

Only use universal contact blocks.

## RAFIX 16 - Emergency stop pushbutton, square collar, not illuminable



illumination	Colour of mushroom	Order no.
no	opaque red	<b>1.30.074.101/0301</b>

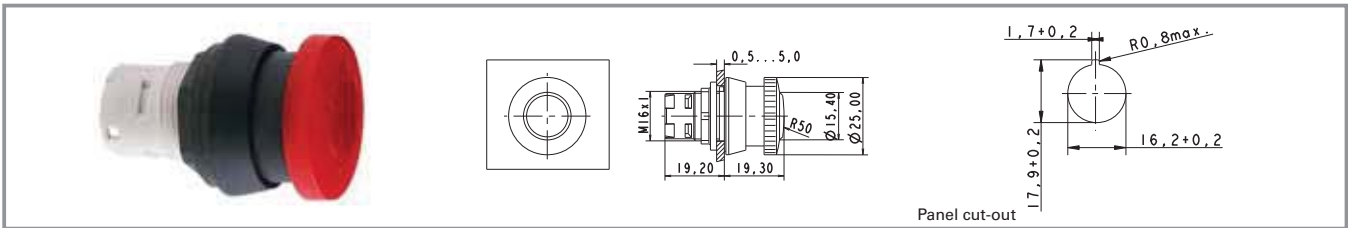
Technical data see page 2 - 32

Only use universal contact blocks.

The positively driven mechanical arrangement is dupe-proof to DIN EN ISO 13850.



## RAFIX 16 - Emergency stop pushbutton, round collar, illuminable

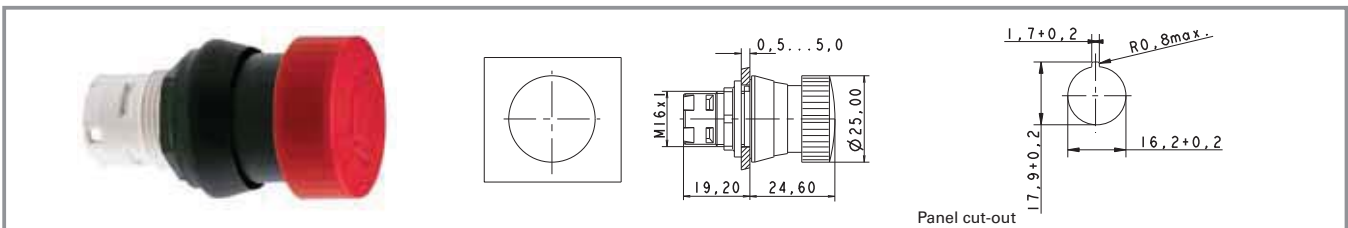


Illumination	Colour of mushroom	Order no.
yes	translucent red	<b>1.30.074.521/0304</b>

Technical data see page 2 - 32

Only use universal contact blocks.

## RAFIX 16 - Emergency stop pushbutton, round collar, not illuminable



Illumination	Colour of mushroom	Order no.
no	opaque red	<b>1.30.074.121/0301</b>

Technical data see page 2 - 32

Only use universal contact blocks.

The positively driven mechanical arrangement is dupe-proof to DIN EN ISO 13850.

## RAFIX 16 - Toggle switch



Panel cut-out

2

### Technical Data

#### General information

Form of collar see order block

#### Dimensions

Collar dimensions see order block  
Overall height 18.4 mm  
Mounting depth 44.7 mm  
Mounting hole 16.2 mm  
Key grid 25 x 25 mm

#### Mechanical design

Mounting ring nut  
Contact function latching  
Contact arrangement according to contact block  
Illumination no

#### Mechanical characteristics

Robustness min. 100 N

#### Other specifications

Degree of protection from front side IP65  
Operation temperature min. -25 °C  
Ambient temp. operating max. without lamp /LED +70 °C  
Ambient temp. operating max. with lamp /LED +55 °C  
Storage temperature min. -40 °C  
Storage temperature max. +85 °C  
Environmental resistance acc. to IEC 60068-2 -14, -30, -33 and -78  
Operating life (operations) 300,000

#### Approvals



IEC 61058



C22.2 No. 14-M91

### Typical accessories RAFIX 16 - Toggle switch

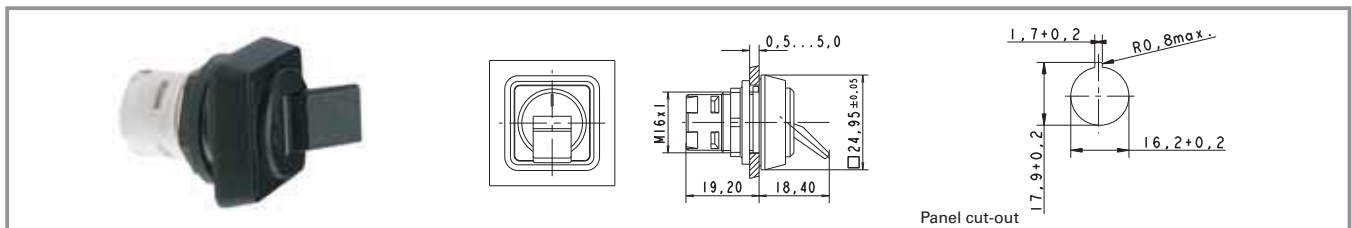
Description	Photo	Order no.	Additional accessories see page
RAFIX 16 - Standard contact block, 1 NC + 1 NO, momentary, silver contacts, without lamp socket		<b>1.20.122.021/0000</b>	2 - 82
RAFIX 16 - Standard contact block, 1 NC + 1 NO, momentary, gold contacts, without lamp socket		<b>1.20.122.031/0000</b>	2 - 76
RAFIX 16 - Standard contact block, silver contacts, without lamp socket, screw terminals		<b>1.20.122.121/0000</b>	2 - 83
RAFIX 16 - Standard contact block, gold contacts, without lamp socket, screw terminals		<b>1.20.122.131/0000</b>	2 - 77

## Typical accessories RAFIX 16 - Toggle switch

Description	Photo	Order no.	Additional accessories see page
RAFIX 16 - Contact block AS-I, standard		1.20.130.101/0000	2 - 87
Label holder, flush, for square collar		<b>5.07.620.004/0000</b>	2 - 96
Fixing spanner for hexagon nut		<b>5.58.002.034/0000</b>	2 - 95

For other contact blocks, refer to the chapter „RAFIX 16 contact blocks“; for additional accessories, refer to the chapter „RAFIX 16 special accessories“

## RAFIX 16 - Toggle switch, square collar

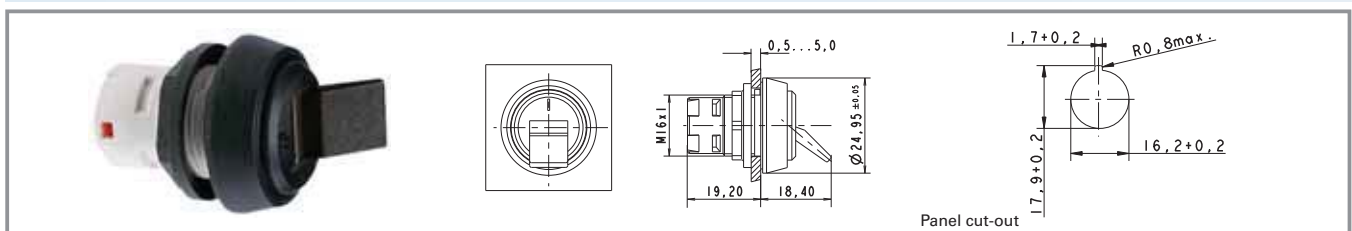


Contact function	Illumination	Order no.
latching	no	1.30.075.001/0104

Technical data see page 2 - 36

Only use contact blocks with „momentary“ contact function.

## RAFIX 16 - Toggle switch, round collar

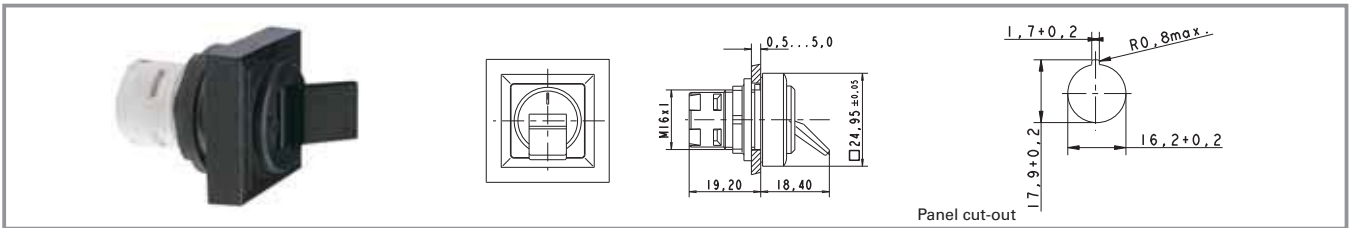


Contact function	Illumination	Order no.
latching	no	1.30.075.021/0104

Technical data see page 2 - 36

Only use contact blocks with „momentary“ contact function.

## RAFIX 16 - Toggle switch, square collar, alignable without gaps



Contact function	Illumination	Order no.
latching	no	1.30.075.041/0104

Technical data see page 2 - 36

Only use contact blocks with „momentary“ contact function.

2

RAFIX  
16



## RAFIX 16 - Potentiometer drive



2

### General Data

To operate potentiometers with a shaft diameter of 6 mm.  
 Suitable for potentiometers to DIN 41 450 with a shaft length of 32 mm.  
 Potentiometer not included.

RAFIX  
16

### Technical Data

#### General information

Form of lens handle  
 Colour of handle black  
 Form of collar see order block

#### Dimensions

Collar dimensions see order block  
 Overall height 23.65 mm  
 Mounting depth 19.2 mm  
 Mounting hole 16.2 mm  
 Key grid 25 x 25 mm

#### Mechanical design

Mounting ring nut  
 Thread nut M10 x 0,75

#### Other specifications

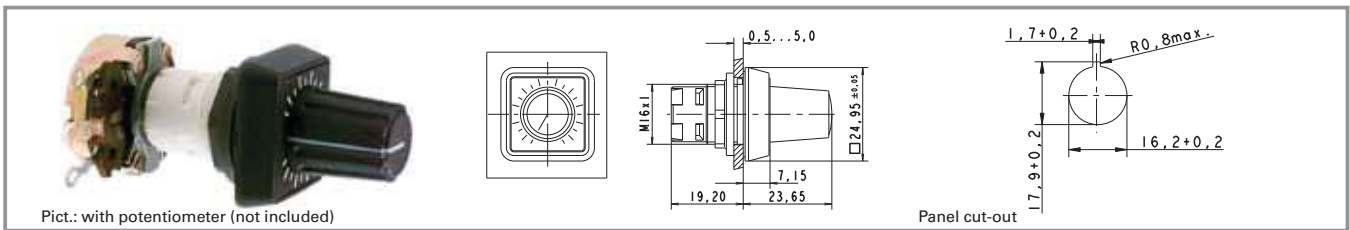
Degree of protection from front side IP65  
 Operation temperature min. -25 °C  
 Ambient temp. operating max. +70 °C  
 Storage temperature min. -40 °C  
 Storage temperature max. +85 °C  
 Environmental resistance acc. to IEC 60068-2 -14, -30, -33 and -78

### Typical accessories RAFIX 16 - Potentiometer drive

Description	Photo	Order no.	Additional accessories see page
Label holder, flush, for square collar		<b>5.07.620.004/0000</b>	2 - 96
Fixing spanner for hexagon nut		<b>5.58.002.034/0000</b>	2 - 95

For additional accessories, refer to the chapter „RAFIX 16 special accessories“

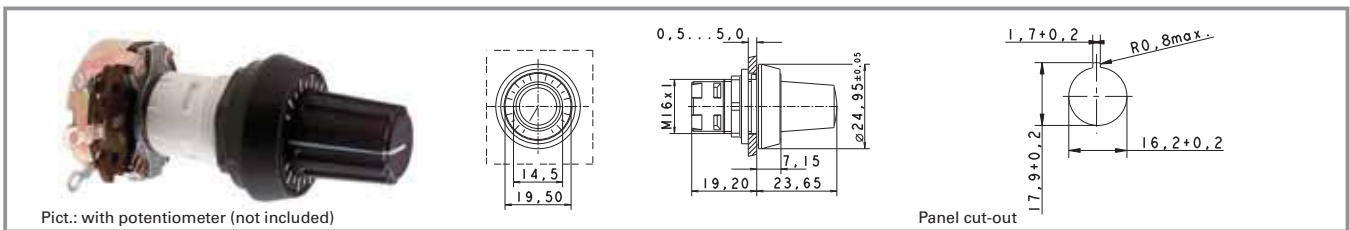
## RAFIX 16 - Potentiometer drive, square collar



Form of lens	Form of collar	Colour of handle	Order no.
handle	square	black	1.30.077.001/0000

Technical data see page 2 - 40

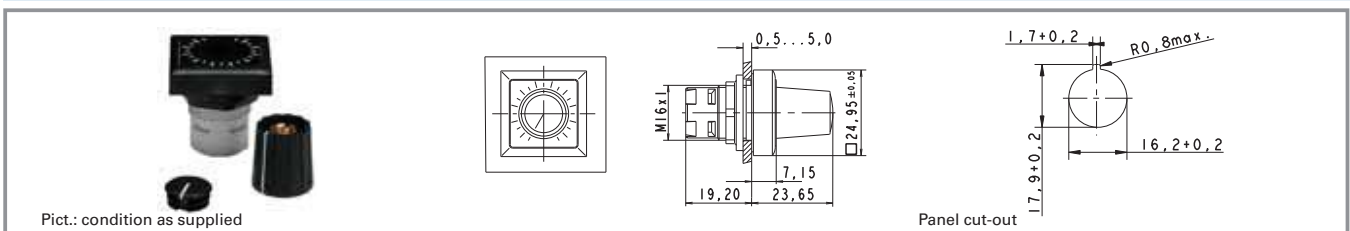
## RAFIX 16 - Potentiometer drive, round collar



Form of lens	Form of collar	Colour of handle	Order no.
handle	round	black	1.30.077.021/0000

Technical data see page 2 - 40

## RAFIX 16 - Potentiometer drive, square collar, alignable without gaps



Form of lens	Form of collar	Colour of handle	Order no.
handle	square alignable	black	1.30.077.041/0000

Technical data see page 2 - 40

## RAFIX 16 - Buzzer



Panel cut-out

2

### Technical Data

#### General information

Form of lens	flat lens
Colour of lens	opaque black
Form of collar	see order block
Sound	see order block

#### Dimensions

Collar dimensions	see order block
Overall height	6.95 mm
Mounting depth	30.5 mm
Mounting hole	16.2 mm
Key grid	25 x 25 mm

#### Mechanical design

Mounting	ring nut
----------	----------

#### Mechanical characteristics

Robustness min.	100 N
-----------------	-------

#### Electrical characteristics

Operating voltage DC	24 V
Input current	see order block

#### Acoustic characteristics

Sonic pressure, 1 m distance	see order block
min. Sound frequency	2400 - 3100 Hz

#### Other specifications

Degree of protection from front side	IP65
Operation temperature min.	-25 °C
Ambient temp. operating max.	+70 °C
Storage temperature min.	-40 °C
Storage temperature max.	+85 °C
Environmental resistance	acc. to IEC 60068-2 -14, -30, -33 and -78

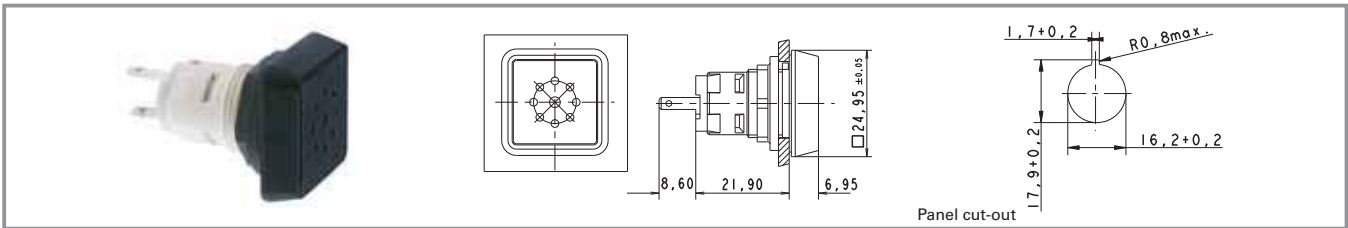
### Typical accessories RAFIX 16 - Buzzer

Description	Photo	Order no.	Additional accessories see page
Fixing spanner for hexagon nut		<b>5.58.002.034/0000</b>	2 - 95

For additional accessories, refer to the chapter „RAFIX 16 special accessories“



## RAFIX 16 - Buzzer, square collar



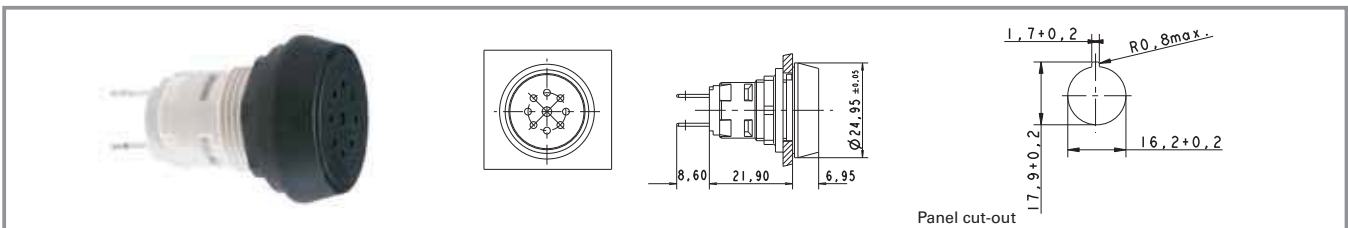
Operating voltage DC	Input current	Sound	Sonic pressure, 1 m distance min.	Order no.
24 V	25 mA	continuos beep	70 dB	1.30.078.001/0100

Technical data see page 2 - 42

12V DC available on request.

2

## RAFIX 16 - Buzzer, round collar



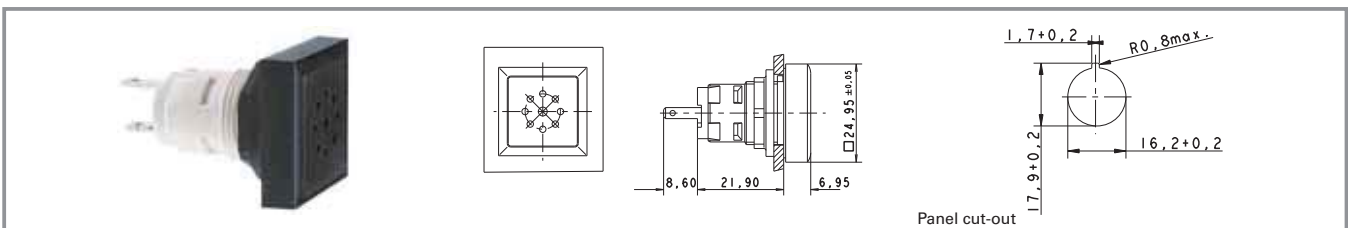
Operating voltage DC	Input current	Sound	Sonic pressure, 1 m distance min.	Order no.
24 V	25 mA	continuos beep	70 dB	1.30.078.021/0100

Technical data see page 2 - 42

12V DC available on request.

RAFIX  
16

## RAFIX 16 - Buzzer, square collar, alignable without gaps

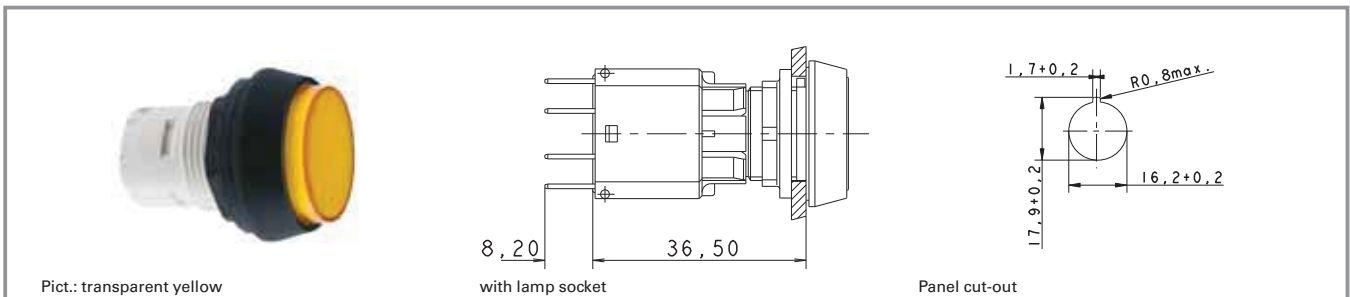


Operating voltage DC	Input current	Sound	Sonic pressure, 1 m distance min.	Order no.
24 V	25 mA	continuos beep	70 dB	1.30.078.041/0100

Technical data see page 2 - 42

12V DC available on request.

## RAFIX 16 - Signal indicator



2

RAFIX 16

### Technical Data

#### General information

Form of lens see order block  
 Colour of lens see order block  
 Form of collar see order block

#### Dimensions

Collar dimensions see order block  
 Overall height see order block  
 Mounting depth 30.5 / 44.7 mm  
 Mounting hole 16.2 mm  
 Key grid 25 x 25 mm

#### Mechanical design

Mounting ring nut

#### Other specifications

Degree of protection from front side IP65  
 Operation temperature min. -25 °C  
 Ambient temp. operating max. without lamp /LED +70 °C  
 Ambient temp. operating max. with lamp /LED +55 °C  
 Storage temperature min. -40 °C  
 Storage temperature max. +85 °C  
 Environmental resistance acc. to IEC 60068-2 -14, -30, -33 and -78

#### Approvals



IEC 61058



C22.2 No. 14-M91

### Typical accessories RAFIX 16 - Signal indicator

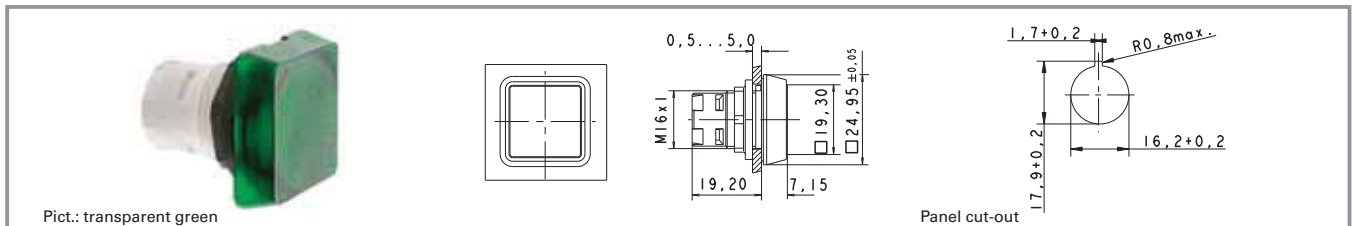
Description	Photo	Order no.	Additional accessories see page
RAFIX 16 - Lamp socket W 2 x 4.6 d		<b>1.71.212.001/0000</b>	2 - 91
RAFIX 16 - Lamp socket W 2 x 4.6 d		<b>1.71.212.011/0000</b>	2 - 91
LED W 2 x 4.6d superbright, white, 24V		<b>1.90.690.365/0000</b>	5 - 14
Disassembly tool for LUMOTAST 25, RAFIX 16		<b>5.05.800.042/0000</b>	2 - 94
Label holder, flush, for square collar		<b>5.07.620.004/0000</b>	2 - 96

## Typical accessories RAFX 16 - Signal indicator

Description	Photo	Order no.	Additional accessories see page
Fixing spanner for hexagon nut		<b>5.58.002.034/0000</b>	2 - 95

For suitable LEDs and filament lamps, refer to the chapter „RAFIX 16 lamp sockets“; for additional accessories, refer to the chapter „RAFIX 16 special accessories“.

## RAFIX 16 - Signal indicator, square lens

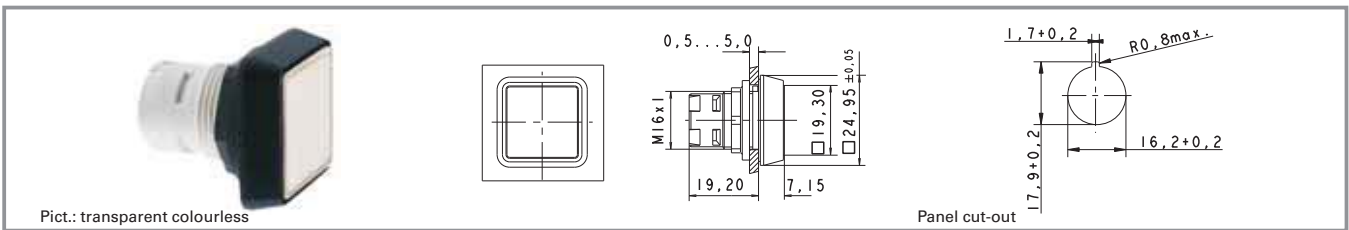


Form of lens	Colour of lens	Order no. complete	Order no. single parts	
			Housing	Lens
lens square	transparent colourless	<b>1.65.124.001/1002</b>	1.65.124.101/0000	5.49.263.006/1002
lens square	transparent red	<b>1.65.124.001/1306</b>	1.65.124.101/0000	5.49.263.006/1306
lens square	transparent yellow	<b>1.65.124.001/1403</b>	1.65.124.101/0000	5.49.263.006/1403
lens square	transparent green	<b>1.65.124.001/1505</b>	1.65.124.101/0000	5.49.263.006/1505
lens square	transparent blue	<b>1.65.124.001/1607</b>	1.65.124.101/0000	5.49.263.006/1607

Technical data see page 2 - 44

Legending can only be made externally on a label holder.

## RAFIX 16 - Signal indicator, square collar, flush lens



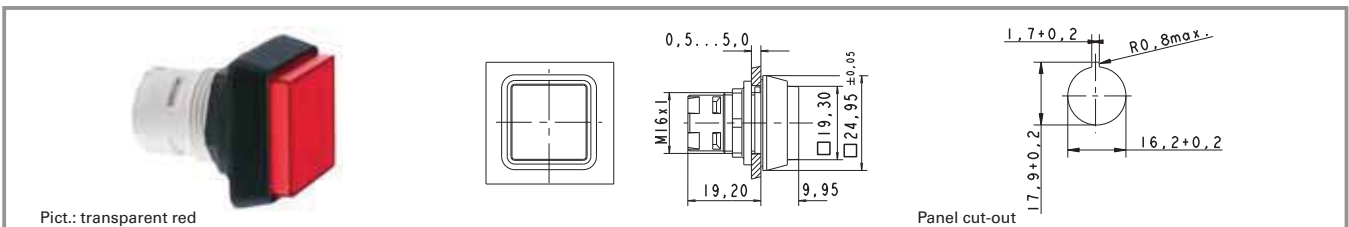
Form of lens	Colour of lens	Order no. complete	Order no. single parts	
			Housing	Lens
flat lens	transparent colourless	1.65.124.301/1002	1.65.124.401/0000	5.49.077.011/1002
flat lens	transparent red	1.65.124.301/1306	1.65.124.401/0000	5.49.077.011/1306
flat lens	transparent yellow	1.65.124.301/1403	1.65.124.401/0000	5.49.077.011/1403
flat lens	transparent green	1.65.124.301/1505	1.65.124.401/0000	5.49.077.011/1505
flat lens	transparent blue	1.65.124.301/1607	1.65.124.401/0000	5.49.077.011/1607

Technical data see page 2 - 44

**Accessoires:**

Legend insert, blank, use only for transparent lenses: **5.70.635.000/2000**

## RAFIX 16 - Signal indicator, square collar, protruding lens



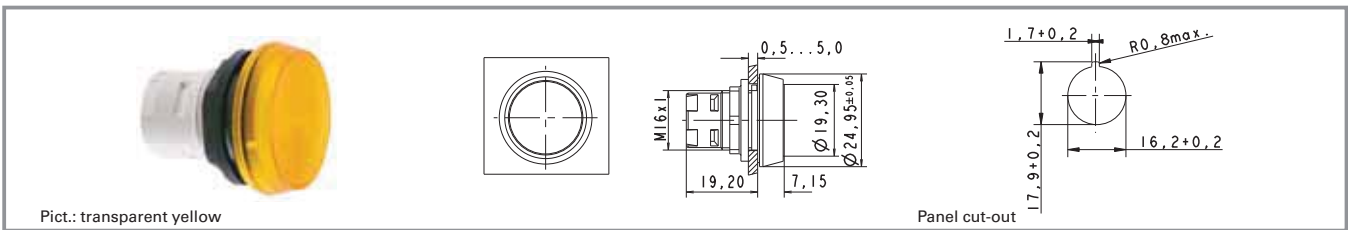
Form of lens	Colour of lens	Order no. complete	Order no. single parts	
			Housing	Lens
protruding lens	transparent colourless	1.65.124.351/1002	1.65.124.451/0000	5.49.077.012/1002
protruding lens	transparent red	1.65.124.351/1306	1.65.124.451/0000	5.49.077.012/1306
protruding lens	transparent yellow	1.65.124.351/1403	1.65.124.451/0000	5.49.077.012/1403
protruding lens	transparent green	1.65.124.351/1505	1.65.124.451/0000	5.49.077.012/1505
protruding lens	transparent blue	1.65.124.351/1607	1.65.124.451/0000	5.49.077.012/1607

Technical data see page 2 - 44

**Accessoires:**

Legend insert, blank, use only for transparent lenses: **5.70.635.000/2000**

## RAFIX 16 - Signal indicator, round lens



Form of lens	Colour of lens	Order no. complete	Order no. single parts	
			Housing	Lens
lens round	transparent colourless	<b>1.65.124.021/1002</b>	1.65.124.101/0000	5.49.263.007/1002
lens round	transparent red	<b>1.65.124.021/1306</b>	1.65.124.101/0000	5.49.263.007/1306
lens round	transparent yellow	<b>1.65.124.021/1403</b>	1.65.124.101/0000	5.49.263.007/1403
lens round	transparent green	<b>1.65.124.021/1505</b>	1.65.124.101/0000	5.49.263.007/1505

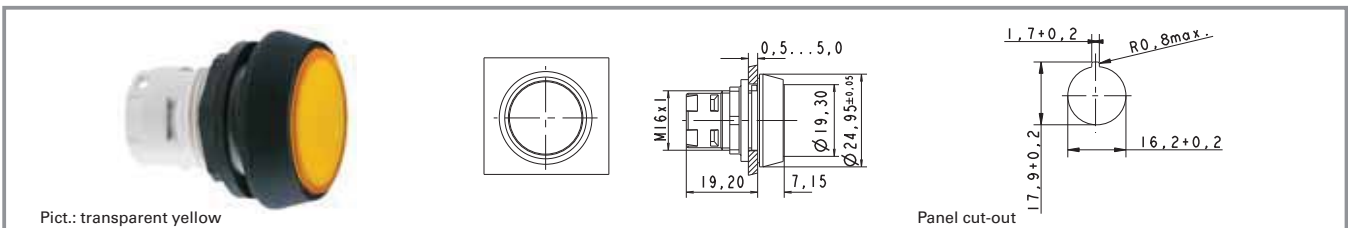
Technical data see page 2 - 44

Legending can only be made externally on a label holder.

2

RAFIX  
16

## RAFIX 16 - Signal indicator, round collar, flush lens



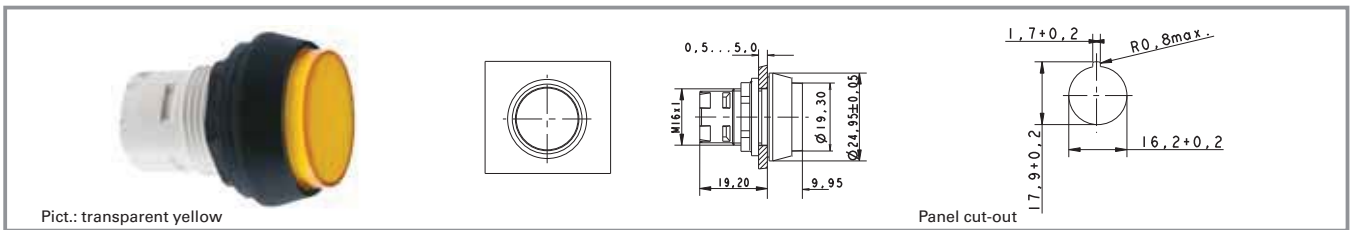
Form of lens	Colour of lens	Order no. complete	Order no. single parts	
			Housing	Lens
flat lens	transparent colourless	1.65.124.321/1002	1.65.124.421/0000	5.49.259.017/1002
flat lens	transparent red	1.65.124.321/1306	1.65.124.421/0000	5.49.259.017/1306
flat lens	transparent yellow	1.65.124.321/1403	1.65.124.421/0000	5.49.259.017/1403
flat lens	transparent green	1.65.124.321/1505	1.65.124.421/0000	5.49.259.017/1505
flat lens	transparent blue	1.65.124.321/1607	1.65.124.421/0000	5.49.259.017/1607

Technical data see page 2 - 44

### Accessoires:

Legend insert, blank, use only for transparent lenses: **5.70.637.000/2000**

## RAFIX 16 - Signal indicator, round collar, protruding lens



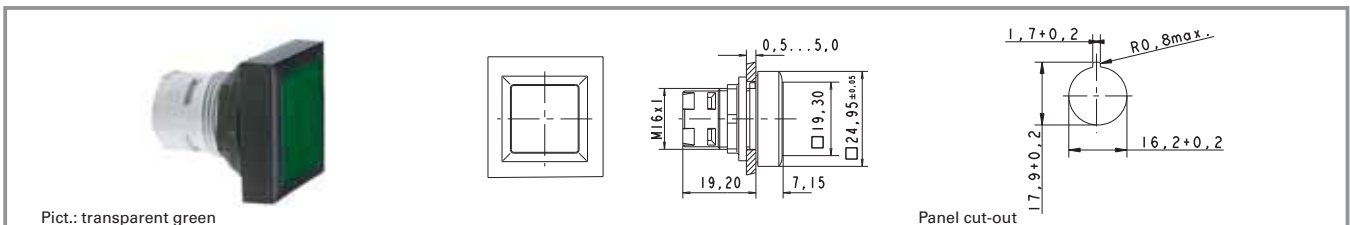
Form of lens	Colour of lens	Order no. complete	Order no. single parts	
			Housing	Lens
protruding lens	transparent colourless	1.65.124.371/1002	1.65.124.471/0000	5.49.259.018/1002
protruding lens	transparent red	1.65.124.371/1306	1.65.124.471/0000	5.49.259.018/1306
protruding lens	transparent yellow	1.65.124.371/1403	1.65.124.471/0000	5.49.259.018/1403
protruding lens	transparent green	1.65.124.371/1505	1.65.124.471/0000	5.49.259.018/1505
protruding lens	transparent blue	1.65.124.371/1607	1.65.124.471/0000	5.49.259.018/1607

Technical data see page 2 - 44

**Accessoires:**

Legend insert, blank, use only for transparent lenses: **5.70.637.000/2000**

## RAFIX 16 - Signal indicator, square collar, alignable without gaps, flush lens



Form of lens	Colour of lens	Order no. complete	Order no. single parts	
			Housing	Lens
flat lens	transparent colourless	1.65.124.551/1002	1.65.124.651/0000	5.49.077.011/1002
flat lens	transparent red	1.65.124.551/1306	1.65.124.651/0000	5.49.077.011/1306
flat lens	transparent yellow	1.65.124.551/1403	1.65.124.651/0000	5.49.077.011/1403
flat lens	transparent green	1.65.124.551/1505	1.65.124.651/0000	5.49.077.011/1505
flat lens	transparent blue	1.65.124.551/1607	1.65.124.651/0000	5.49.077.011/1607

Technical data see page 2 - 44

**Accessoires:**

Legend insert, blank, use only for transparent lenses: **5.70.635.000/2000**

## RAFIX 16 - Signal indicator, square collar, alignable without gaps, protruding lens



Form of lens	Colour of lens	Order no. complete	Order no. single parts	
			Housing	Lens
protruding lens	transparent colourless	1.65.124.501/1002	1.65.124.661/0000	5.49.077.012/1002
protruding lens	transparent red	1.65.124.501/1306	1.65.124.661/0000	5.49.077.012/1306
protruding lens	transparent yellow	1.65.124.501/1403	1.65.124.661/0000	5.49.077.012/1403
protruding lens	transparent green	1.65.124.501/1505	1.65.124.661/0000	5.49.077.012/1505
protruding lens	transparent blue	1.65.124.501/1607	1.65.124.661/0000	5.49.077.012/1607

Technical data see page 2 - 44

**Accessoires:**

Legend insert, blank, use only for transparent lenses: **5.70.635.000/2000**